

BILLENNIUM VISUAL

CRAWLER TELESCOPIC SPIDERBOOM



PATENT PENDING

B1570

B1890



ALMACRAWLER 

BILLENNIUM B1570 VISUAL B1890 VISUAL

**VERSATILITY
EFFICIENCY
CREATIVITY
AGILITY**

The Billennium Line features morphologically unique models to provide a superior user experience and greater market adaptability for the real needs of the rental and end-users sector alike.

The new Line is characterized by its unique automatic stabilization systems. There are two different types of stabilization: VISUAL with a single fixed area and the innovative Quick-PRO, a fully automated stabilization system with six different combinations.

*A new concept
for working at height...
The SpiderBoom!*



15mt.



**1.4 mt BASKET
STANDARD**

**1.8 mt BASKET
OPTIONAL**



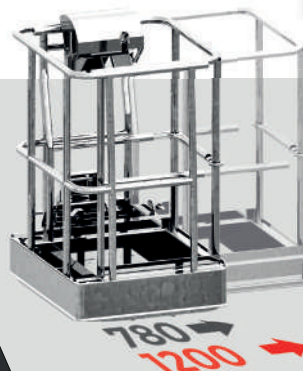
**WINCH
KIT
200 KG**

**BASKET
SIZE**

18mt.

OPTIONAL

**TASKET
RESIZABLE BASKET
DISMOUNTING NOT REQUIRED**



A resizable basket that allows the operator to manually extend the basket sideways.

The Tasket Basket by AlmaCrawler is the only two-operator basket that does not require disassembly to go through narrow passages, extending from a minimum width of 0.78 m to a full 1.20 m.

XXL

ULTRA EXTENDABLE
UNDERCARRIAGE
SIZE "XXL"



With a width of 1,39 m, a length of 2.15 m and a height of 0,47 m, these tracks are the longest and widest on the market.

Their size increases the operator's safety when travelling over rough and sloping terrain.

ATS

AUTOMATIC
TENSIONER
SYSTEM

The track tensioning system is a hydraulic cylinder directly connected to and controlled by the main hydraulic system.

The system creates **ZERO MAINTENANCE** because it ensures the constant and correct tensioning of the track itself.



The SPS system is what allows the use of the Billennium Spiderbooms even without lowering the stabilizers, levelling longitudinally up to a maximum of 10° with a maximum working height of 8 m for the B1570 and 9 m for the B1890 (max lateral slope 5°).

This is made possible by the seamless technological mix of proactive and dynamic levelling, the XXL undercarriage and an automatic hydraulic longitudinal levelling of the basket.



SPS

SELF-PROPELLED
SKILL SYSTEM

PATENT PENDING

EXTRA
OUTREACH



This system calculates the stabilization area in real time by measuring the angle of descend of each individual stabiliser in order to optimise the operational outreach performance over the entire working area up to an extra 0.5 m.

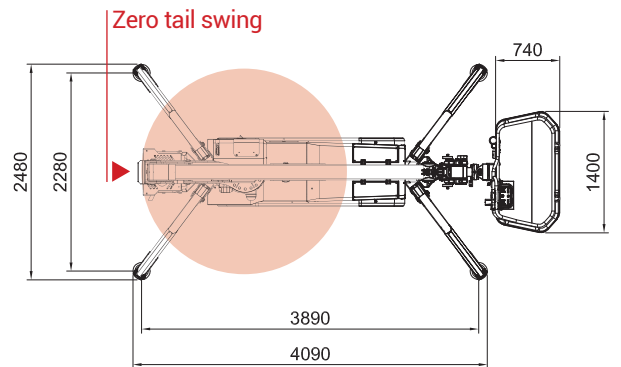
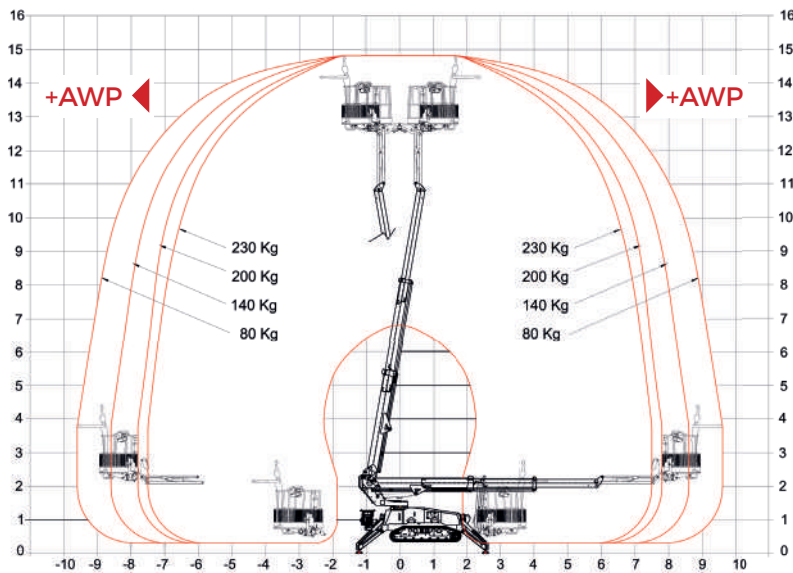
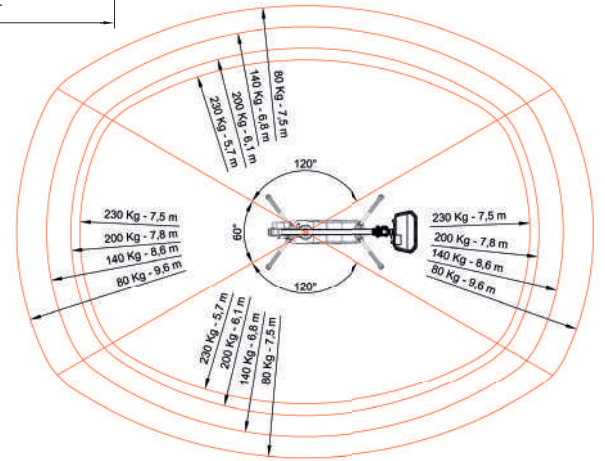
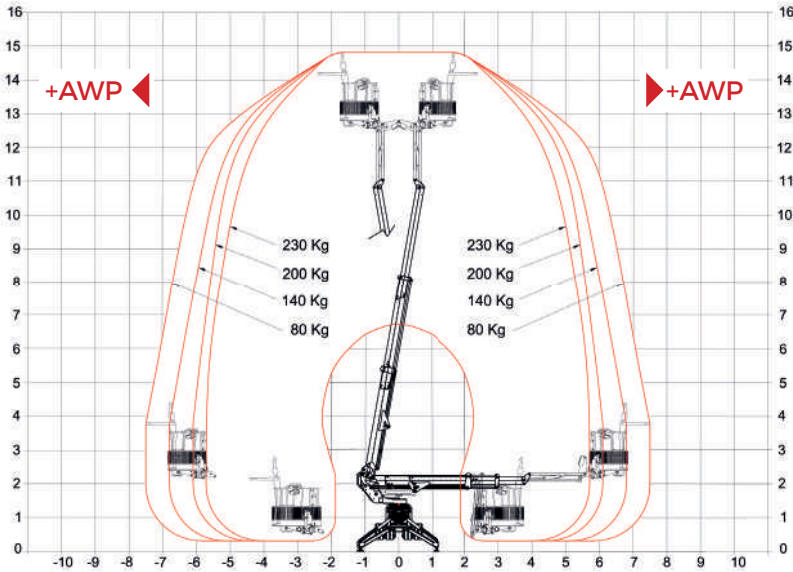
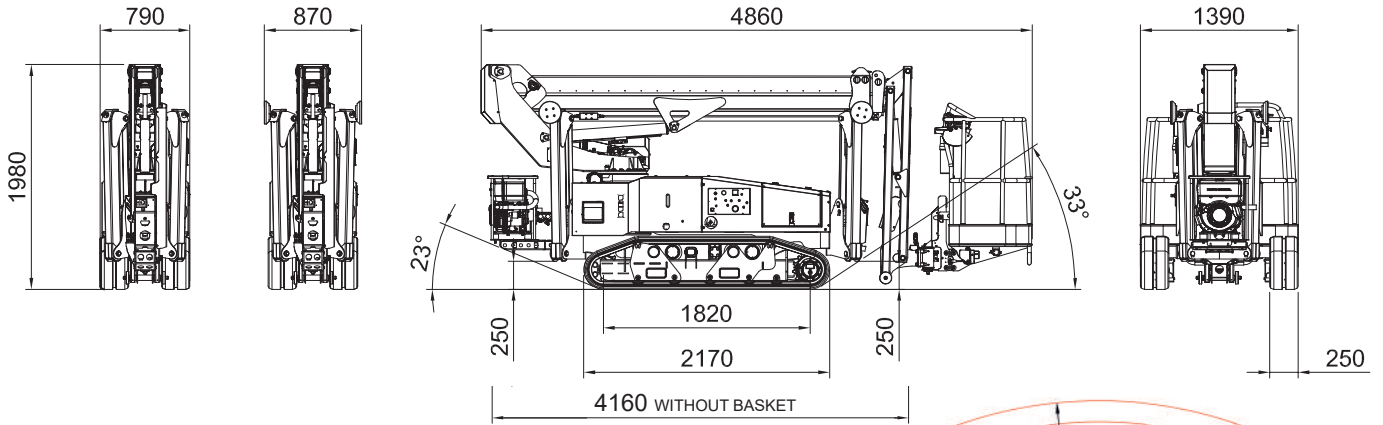
AWP

ADAPTIVE
WORKING
PERFORMANCE

PATENT PENDING

Technical data	ETS	ETS	EVO
Max working height	15,00 m	18,00 m	18,00 m
Max height basket floor	13,00 m	16,00 m	16,00 m
Moving height	8,00 m	9,00 m	9,00 m
Max outreach (load 80 kg)	9,6 m	10,9 m	10,9 m
Max outreach (load 140 kg)	8,6 m	9,8 m	9,8 m
Max outreach (load 200 kg)	7,8 m	8,8 m	8,8 m
Max outreach (load 230 kg or 250 kg)	7,5 m (230 kg)	8,1 m (250 kg)	8,1 m (250 kg)
Rotation angle	+/- 185°	+/- 185°	+/- 185°
Basket size	1,4 x 0,74 m	1,4 x 0,74 m	1,4 x 0,74 m
Basket rotation angle	+/- 70°	+/- 70°	+/- 70°
Max basket capacity	230 Kg	250 Kg	250 Kg
Length in stowed position (with detached basket)	4,86 m (4,16 m)	5,84 m (5,14 m)	5,84 m (5,14 m)
Min width in stowed position	0,79 m	0,79 m	0,79 m
Working width on tracks	1,39 m	1,39 m	1,39 m
Min height in stowed position	1,98 m	1,98 m	1,98 m
Longitudinal leveling by SPS	+/- 10°	+/- 10°	+/- 10°
Max lateral inclination with SPS	+/- 5°	+/- 5°	+/- 5°
Max gradeability	20°	20°	20°
Max side gradeability	+/- 5°	+/- 5°	+/- 5°
Maximum stabilisation area	2,48 m x 4,09 m	3,12 m x 4,57 m	3,12 m x 4,57 m
Stabilization	Automatic	Automatic	Automatic
Drive speed (fast)	2,5 Km/h	2,5 Km/h	2,5 Km/h
Drive speed while at height	0,4 Km/h	0,4 Km/h	0,4 Km/h
Non-marking tracks	Yes	Yes	Yes
Cable Remote LED Console or DISPLAY	Yes	Yes	Yes
ATS, AWP, SPS	Yes	Yes	Yes
Removable pads	Yes	Yes	Yes
Weights			
Total weight	~2617 Kg	~2805 Kg	~2893 Kg
Power			
Main Power Source	"Honda iGX390 7.0 kW (9.4 HP) @ 3600 rpm"	"Honda iGX390 7.0 kW (9.4 HP) @ 3600 rpm"	"YANMAR 2TNV70 10.2 kW (13.9 HP) @ 3600 rpm"
Hydraulic gearmotors	Yes	Yes	Yes
Electric gearmotors	No	No	No
N°2 battery charger 20Ah-48 V	No	No	No
Extras - On Demand			
Tasket Basket	0,78 (1,20) x 0,70	0,78 (1,20) x 0,7 m	0,78 (1,20) x 0,7 m
Wide Basket	No	1,8 x 0,7 m	1,8 x 0,7 m
Motore Hatz 1B40 Diesel Engine	6.8 kW (9.3 HP) @ 3600 rpm	6.8 kW (9.3 HP) @ 3600 rpm	No
Electric pump 220V-2,2KW / 50Hz (Weight +30 Kg)	Yes	Yes	Yes
Radio remote display or led control	Yes	Yes	Yes
Arctic lubricant for cold climate	Yes	Yes	Yes
Winch Kit Series 200 kg	Yes	Yes	Yes
Anticollision System	Yes	Yes	Yes
Customized powder coating (One Special Colour + BLACK 9005)	Yes	Yes	Yes

B1570 VISUAL



LED



DISPLAY



**CONTROL
DEVICE**

Available on all models: LED or DISPLAY radio or remote console. Both versions have been designed to be user-friendly and allow proportional joystick driving.



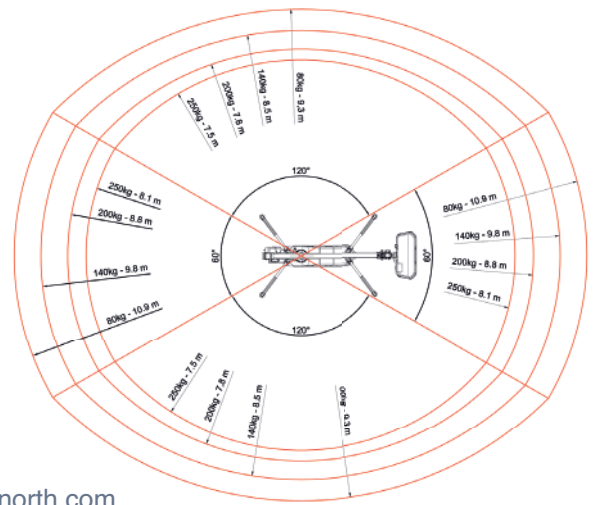
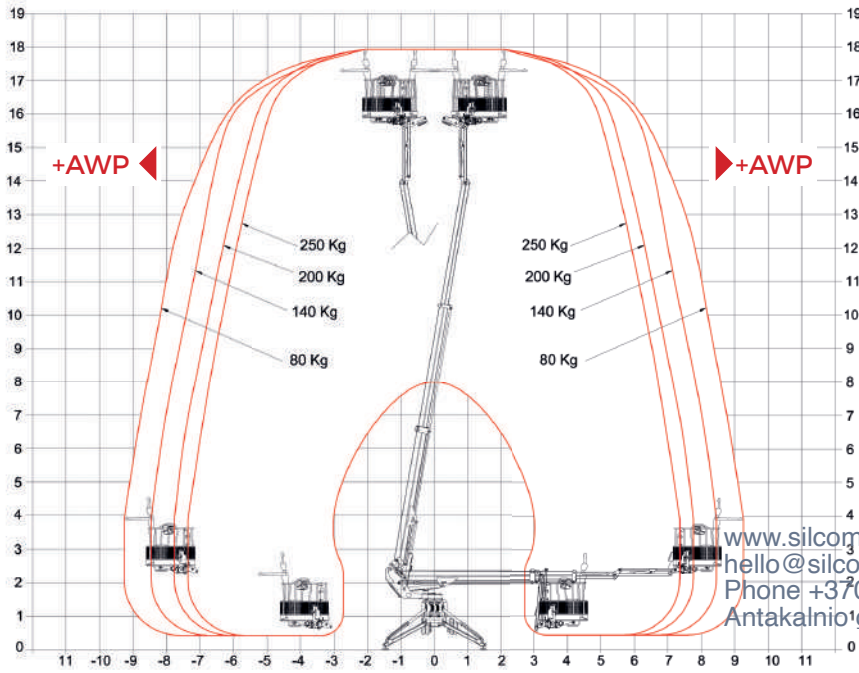
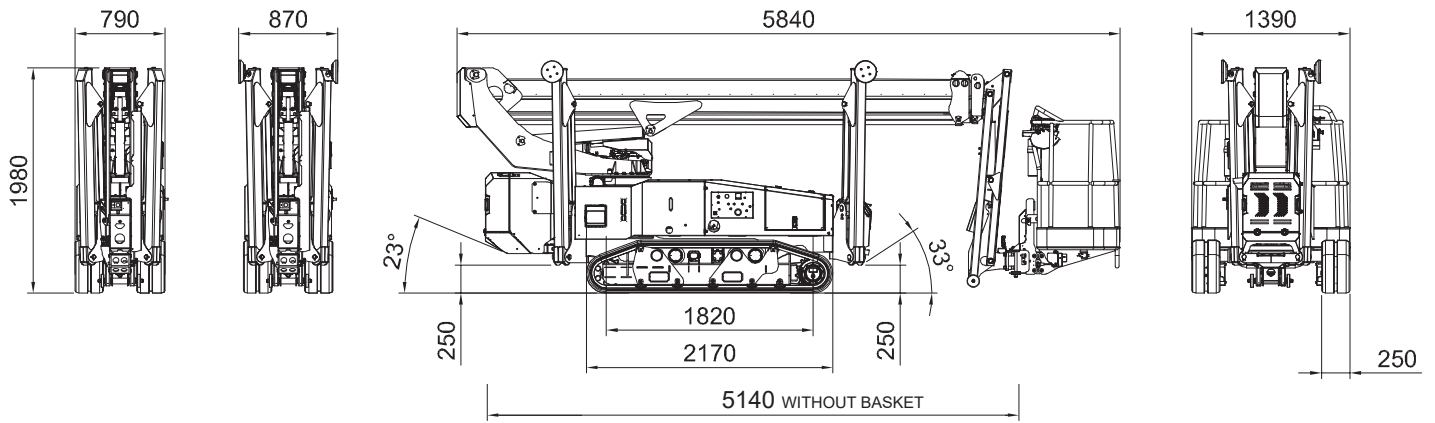
Simplify and centralize the management of all after sales activities, spare parts purchasing and warranty procedures.

Providing 24/7 access to all technical documents and tools for daily management.

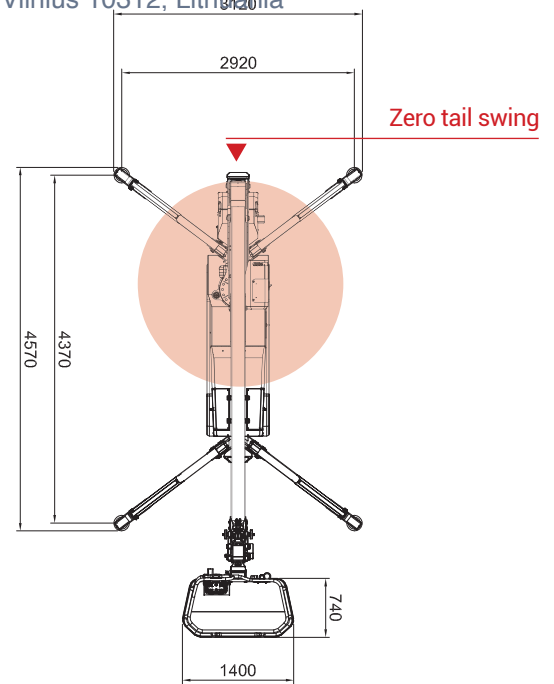
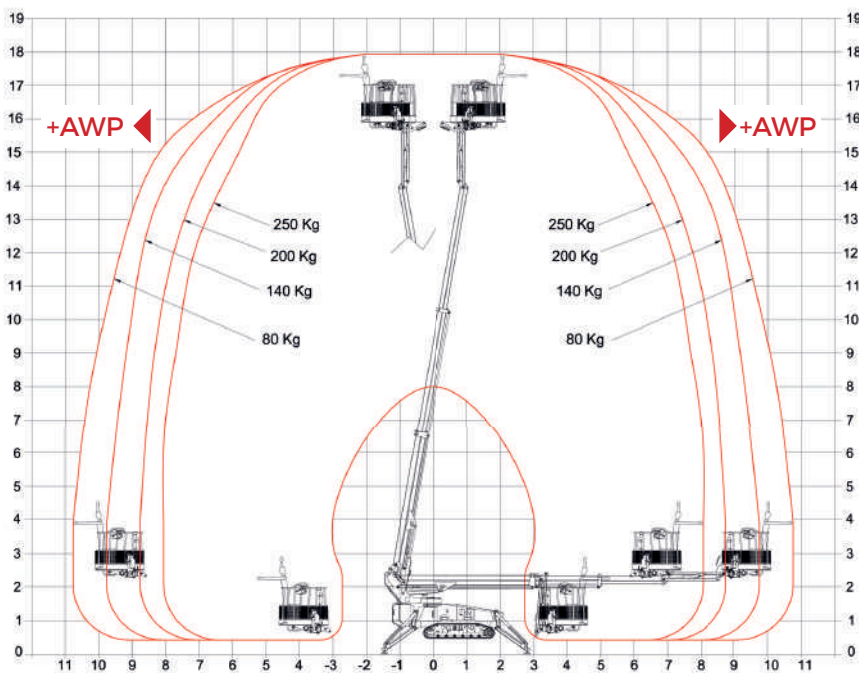
Manage all your ALMAC products in one single online portal.

**MYALMAC
CONTROL
PANEL**

B1890 VISUAL



www.silcomnorth.com
 hello@silcomnorth.com
 Phone +370 67216691
 Antakalnio g. 17, Vilnius 10312, Lithuania



ALMACRAWLER

SILCOMNORTH UAB

www.silcomnorth.com
 hello@silcomnorth.com
 Phone +370 67216691
 Antakalnio g. 17, Vilnius 10312, Lithuania