

ENG

ORTECO[®]
S.r.l a socio unico

Always in **Pole** Position



Machines Catalogue

Reliability, performance,
innovation

www.orteco.com



ORTECO[®]
S.r.l a socio unico



Always in **Pole** Position

Orteco is a company founded in 1971

and located in the industrial area of Bologna, in the heart of one of the main production centers of the country.

In its first 50 years of activity, Orteco has developed and grown supplying to its customers products and services of ever increasing value.

Today Orteco manufactures pile drivers for different fields, with a wide range of products characterized by high performance, excellent quality and reliability. Orteco production, initially oriented to road safety, has been successfully expanded to the world of photovoltaics, providing the market with high end solutions and technical developments.



Main strenghts

Thanks to a qualified team, we are able to satisfy every request.





Research and development

We invest in innovation every day, making use of the expertise of our highly qualified technicians, focusing on the development of new machines to offer solutions that fully meet the needs of an increasingly competitive and demanding market.



An established presence in the world

With over 2,000 machines sold throughout the world, thanks to our partners' expertise and commitment, combined with the loyalty shown by our customers throughout the decades.



A market benchmark

The Orteco pile driver is designed and built to be the market leader. Our machines are innovative, safe, reliable and powerful: for this reason today we represent a player recognized in the world.

Technical advantages

That's why our pile drivers are the no. 1 in the industry:



Strength and reliability

In addition to equip our machines with first quality components, we use a "free hammer" system that works exerting its weight on the pole: not being permanently connected to the post, it does not transmit vibrations to the machine, guaranteeing long life to all its components. We also minimize the use of welding and we adequately protect electrical systems and control panels (IP 65).





Safety and low noise

The hydraulic pipes are in a protected position and the operator is not exposed to risks in the event of a hydraulic oil leak; the hammer is contained in a box which prevents the spread of any iron splinters produced by the percussion, and isolated by polyurethane molds to reduce noise.



Functionality and versatility

Our pile drivers can easily be closed in transport position and loaded in line with the truck, occupying only 2.3 meters.

We can also equip our machines with a wide range of accessories (core drill, auger, barrier lifter, GPS system, etc.) to effectively carry out various types of work.

Market sectors

➤ page **Photovoltaic**
10

Orteco pile drivers, working in photovoltaic parks throughout the world, are contributing to the green change established by many governments. Reliability, high productivity levels and constant technical research, make Orteco a top brand on a global scale.

➤ page **Road safety**
20

We offer advanced solutions to tackle guardrail installation work with maximum safety and productivity, as well as reinforcing existing barriers: tracked pile drivers, truck pile drivers, excavator pile drivers, crane pile drivers and highly automated machines such as barrier layers and core borers with 1-2-4 heads.





➤ page **Vineyards**
30

The PPA - agricultural pile driver - line is designed and built to carry out the work of driving piles for vineyards and orchards with the help of our in-house developed Orteco GPS Machine Control System. The machine displaces autonomously moving from the driven post to the next one with speed and precision.

➤ page **Fencing**
32

Orteco units suitably modified, can also carry out special jobs such as driving large wooden poles to make fences for horses, farms and to delimit agricultural areas.

➤ page **Beach Umbrellas**
34

Orteco also manufactures solutions to ease beach umbrellas installation throughout automated units under GPS autonomous sequence.

➤ page **Many other applications**
36

Our pile-driving machines, can also be assembled on trucks, truck cranes and excavators.

Photovoltaic

Pile driver
HD 950 J / 1200 J
Tracked pile driver

ORTECO HD pile drivers are designed and built to take on tough jobs. The more robust frames, the greater hammer powers and the consequent increase in weight, give the series "HEAVY DUTY" the right features for long lasting pile driving shifts.



Download the data sheet
 and watch our videos

<https://rb.gy/aquaxg>





ORTECO GPS M.C.S.
(accessory)



NEW POWER PACKS
New Stage 5 / Tier 4 final compliant engines, watercooled and equipped with a diesel particulate filter



DOWN THE HOLE HAMMER
(accessory)



PLATES - Plates of super resistant material with post profiles milling

Technical features		
Model	950 J	1200 J
Hammer power	950 Joules	1200 Joules
Strokes per minute	620/1500	570/1180
Mast tilt kit	Standard	Standard
Extractor set-up	Standard	Standard
Auxiliary Hydraulic System	Standard	Standard
Electrical System	12 Volt	12 Volt
YANMAR diesel engine	4TNV88C	4TNV88C
Double speed system	Standard	Standard
Power (@ 3000 Rpm)	35,4 Kw (47,5 Hp)	35,4 Kw (47,5 Hp)
Max operating pressure	18 Mpa	18 Mpa
Oil flow	95 Dm ³ /min	95 Dm ³ /min
Hydraulic tank capacity	160 Dm ³	160 Dm ³
Diesel tank capacity	60 Dm ³	60 Dm ³
DFP Filter	Standard	Standard
Emission Legislation (*)	Stage 5 / Tier 4 final	Stage 5 / Tier 4 final
Color display with physical keys	3,5"	3,5"
Total weight	3950 Kg	4050 Kg

The manufacturer reserves the right to modify the technical features without prior notice.
Photos may show non-standard accessories.



LASER KIT (accessory)



(*) also available with Stage 3A compliant engines

Photovoltaic

Pile driver
HD Pro 5m 1200 J / 1500 J
Tracked pile driver

ORTECO HD range has extended with the **HD Pro 5M** designed and built to take on tough jobs. The more robust frames, the greater hammer powers and the consequent increase in weight, give the series "HEAVY DUTY" the right features for long lasting pile driving shifts. Today 5 m posts won't require a bulky unit as this version preserves most of the HD specs providing more hammering power.



Download the data sheet
and watch our videos

<https://rb.gy/aquaxg>





ORTECO GPS M.C.S.
(accessory)



NEW POWER PACKS

New Stage 5 / Tier 4 final compliant engines, watercooled and equipped with a diesel particulate filter



DOWN THE HOLE HAMMER
(accessory)



PLATES - Plates of super resistant material with post profiles milling

Technical features		
Model	1200 J	1500 J
Hammer power	1200 Joules	1500 Joules
Strokes per minute	570/1180	450/980
Mast tilt kit	Standard	Standard
Extractor set-up	Standard	Standard
Auxiliary Hydraulic System	Standard	Standard
Electrical System	12 Volt	12 Volt
YANMAR diesel engine	4TNV88C	4TNV88C
Double speed system	Standard	Standard
Power (@ 3000 Rpm)	35,4 Kw (47,5 Hp)	35,4 Kw (47,5 Hp)
Max operating pressure	18 Mpa	18 Mpa
Oil flow	110 Dm ³ /min	110 Dm ³ /min
Hydraulic tank capacity	160 Dm ³	160 Dm ³
Diesel tank capacity	60 Dm ³	60 Dm ³
DFP Filter	Standard	Standard
Emission Legislation (*)	Stage 5 / Tier 4 final	Stage 5 / Tier 4 final
Color display with physical keys	3,5"	3,5"
Total weight	5025 Kg	5035 Kg

The manufacturer reserves the right to modify the technical features without prior notice.
Photos may show non-standard accessories.



LASER KIT (accessory)



(*) also available with Stage 3A compliant engines

Photovoltaic

Pile driver
FEX 6m 1500 J / 1750 J

Tracked pile driver

ORTECO FEX 6m can drive piles with a maximum length of 6 m, on terrains with an inclination up to 8°. Its steel tracks allow to work on any type of terrain. Its high percussion power allows to drive poles even in the most difficult conditions.



Download the data sheet
and watch our videos

<https://rb.gy/aquaxg>





ORTECO GPS M.C.S.
(accessory)



NEW POWER PACKS

New Stage 5 / Tier 4 final compliant engines, watercooled and equipped with a diesel particulate filter



MAGNET KIT (accessory)



PLATES - Plates of super resistant material with post profiles milling

Technical features		
Model	1500 J	1750 J
Hammer power	1500 Joules	1750 Joules
Strokes per minute	450/980	420/1000
Mast tilt kit	Standard	Standard
Extractor set-up	Standard	Standard
Auxiliary Hydraulic System	Standard	Standard
Electrical System	12 Volt	12 Volt
YANMAR diesel engine	4TNV88C	4TNV88C
Double speed system	Standard	Standard
Power (@ 3000 Rpm)	35,4 Kw (47,5 Hp)	35,4 Kw (47,5 Hp)
Max operating pressure	18 Mpa	18 Mpa
Oil flow	130 Dm ³ /min	130 Dm ³ /min
Hydraulic tank capacity	200 Dm ³	200 Dm ³
Diesel tank capacity	100 Dm ³	100 Dm ³
DFP Filter	Standard	Standard
Emission Legislation (*)	Stage 5 / Tier 4 final	Stage 5 / Tier 4 final
Color display with physical keys	3,5"	3,5"
Total weight	7000 Kg	7000 Kg

The manufacturer reserves the right to modify the technical features without prior notice.
Photos may show non-standard accessories.



LASER KIT (accessory)



(*) also available with Stage 3A compliant engines

Photovoltaic

Special machines
Pick & Ram 4.5m 1200 J
Tracked pile driver

The **PICK & RAM** is a pile driving machine designed to operate even in extreme environmental conditions, safeguarding operators and increasing productivity on large-scale photovoltaic fields. Thanks to the ROPS-FOPS integrated excavator module, which works in synergy with the electrohydraulic pile loading system, it is now possible to shorten the driving cycle, avoiding the workforce heavy tasks. The operator interface, integrated with the Orteco GPS Machine Control System, ensures precision, speed and effectiveness.



Download the data sheet
and watch our videos

<https://rb.gy/aquaxg>





ORTECO GPS M.C.S.
(accessory)



NEW POWER PACKS

New Stage 5 / Tier 4 final compliant engines, watercooled and equipped with a diesel particulate filter

Technical features

Model	Pick & Ram 1200 J
Rops - Fobs Cabin	Standard
Magnetic Positioning Arm	Standard
Air Conditioning	Standard
Orteco Gps Machine Control System	Standard
Operator Graphic Interface	Standard
Hammer power	1200 Joules
Strokes per minute	570/1180
Mast tiltig kit	Standard
Extractor set-up	Standard
Auxiliary Hydraulic System	Standard
Electrical System	12 Volt
YANMAR diesel engine	4TNV88C
Double speed system	Standard
Power (@ 3000 Rpm)	35,4 Kw (47,5 Hp)
Max operating pressure	18 Mpa
Oil flow	110 Dm ³ /min
Hydraulic tank capacity	190 Dm ³
Diesel tank capacity	85 Dm ³
DFP Filter	Standard
Emission Legislation (*)	Stage 5 / Tier 4 final
Color display with physical keys	3,5"
Total weight	8500 Kg

The manufacturer reserves the right to modify the technical features without prior notice.
Photos may show non-standard accessories.



(*) also available with Stage 3A compliant engines

Photovoltaic

Special machines

P.P.M. Pole Positioning Machine

Tracked Unit

*The **P.P.M.** is a pile-laying machine designed to facilitate field preparation operations, safeguarding the safety of operators and increasing productivity on large-scale photovoltaic fields.*

Thanks to its permanent electro-magnets connected to the pole lifting and laying system, and to its refined predictive software, the profile laying phase can be performed in full effectiveness.

The operator interface, integrated with the Orteco GPS Machine Control System, ensures centimeter accuracy, providing real-time workflow information. Its safety features are completed by smart safety sensors, capable of volumizing obstacles, and a fish-eye camera.



Download the data sheet
and watch our videos

<https://rb.gy/aquaxg>





ORTECO GPS M.C.S.
(accessory)



NEW POWER PACKS

New Stage 5 / Tier 4 final compliant engines, watercooled and equipped with a diesel particulate filter



REAL-TIME WORK FLOW REPORTS

Technical features

Model	P.P.M.
Permanent electromagnet	Standard
Electromagnet Remote control	Standard
Optical positioning sensors	Standard
Lifting arm with smart probes	Standard
Metal tracks	Standard
Electric generator	Standard
Radio control	Standard
Orteco GPS Machine Control System	Standard
Orteco pole positioning console (interface tablet)	Standard
Remote Monitoring System -Geofence-	Standard
Remote assistance modem	Standard
Fish-eye Camera	Standard
Displacement buzzer	Standard
Electrical System	12 Volt
YANMAR diesel engine	4TNV86CT
Double speed system	Standard
Power (@ 3000 Rpm)	44 Kw (59,8 Hp)
Max operating pressure	20 Mpa
Oil flow	130 Dm ³ /min
Hydraulic tank capacity	165 Dm ³
Diesel tank capacity	110 Dm ³
DFP Filter	Standard
Emission Legislation (*)	Stage 5 / Tier 4 final
Total weight	4950 Kg
Total weight (full loaded)	10000 Kg

The manufacturer reserves the right to modify the technical features without prior notice. Photos may show non-standard accessories.



(*) also available with Stage 3A compliant engines

Road Safety

Pile driver
BASIC 550 J / 750 J
Tracked pile driver

The BASIC tracked pile driver was designed to carry out maintenance work and short stretches of road barriers installation. The low weight and the technical solutions adopted, have as their main objective the reduction of costs, consumption and noise, being environmentally friendly.



Download the data sheet
 and watch our videos

<https://rb.gy/aquaxg>





EXTRACTOR KIT (accessory)



NEW POWER PACKS

New Stage 5 / Tier 4 final compliant engines, watercooled and equipped with a diesel particulate filter



DOWN THE HOLE HAMMER (accessory)



PLATES - Plates of super resistant material with post profiles milling



AUGER (accessory)

Technical features		
Model	550 J	750 J
Hammer power	550 Joules	750 Joules
Strokes per minute	540/1670	780/1720
Mast tilting kit	Standard	Standard
Extractor set-up	Standard	Standard
Auxiliary Hydraulic System	Standard	Standard
Electrical System	12 Volt	12 Volt
YANMAR diesel engine	3TNV88C	3TNV88C
Power (@ 3000 Rpm)	27,5 Kw (36,9 Hp)	27,5 Kw (36,9 Hp)
Max operating pressure	15 Mpa	15 Mpa
Oil flow	75 Dm ³ /min	75 Dm ³ /min
Hydraulic tank capacity	110 Dm ³	110 Dm ³
Diesel tank capacity	50 Dm ³	50 Dm ³
DFP Filter	Standard	Standard
Emission Legislation (*)	Stage 5 / Tier 4 final	Stage 5 / Tier 4 final
Color display with physical keys	3,5"	3,5"
Total weight	2225 Kg	2300 Kg

The manufacturer reserves the right to modify the technical features without prior notice. Photos may show non-standard accessories.

(*) also available with Stage 3A compliant engines

Road Safety

Pile driver
SMART 750 J / 950 J

Tracked pile driver

The ORTECO SMART tracked pile driver is designed and built to provide excellent performance while combining low running costs.

The low weight and the technical solutions adopted aim to reduce consumption, noise and to protect the environment.



Download the data sheet
and watch our videos

<https://rb.gy/aquaxg>





EXTRACTOR KIT (accessory)



NEW POWER PACKS

New Stage 5 / Tier 4 final compliant engines, watercooled and equipped with a diesel particulate filter



DOWN THE HOLE HAMMER (accessory)



PLATES - Plates of super resistant material with post profiles milling

Technical features		
Model	750 J	950 J
Hammer power	750 Joules	950 Joules
Strokes per minute	780/1720	620/1500
Mast tilt kit	Standard	Standard
Extractor set-up	Standard	Standard
Auxiliary Hydraulic System	Standard	Standard
Electrical System	12 Volt	12 Volt
YANMAR diesel engine	3TNV88C	3TNV88C
Double speed system	Standard	Standard
Power (@ 3000 Rpm)	27,5 Kw (36,9 Hp)	27,5 Kw (36,9 Hp)
Max operating pressure	15 Mpa	15 Mpa
Oil flow	75 Dm ³ /min	75 Dm ³ /min
Hydraulic tank capacity	110 Dm ³	110 Dm ³
Diesel tank capacity	50 Dm ³	50 Dm ³
DFP Filter	Standard	Standard
Emission Legislation (*)	Stage 5 / Tier 4 final	Stage 5 / Tier 4 final
Color display with physical keys	3,5"	3,5"
Total weight	3050 Kg	3150 Kg

The manufacturer reserves the right to modify the technical features without prior notice. Photos may show non-standard accessories.



AUGER (accessory)

(*) also available with Stage 3A compliant engines

Road Safety

Pile driver
HD 950 J / 1200 J
Tracked pile driver

ORTECO HD pile drivers are designed and built to take on tough jobs. The more robust frames, the greater hammer powers and the consequent increase in weight, give the series "HEAVY DUTY" the right features for long lasting pile driving shifts.



Download the data sheet
 and watch our videos

<https://rb.gy/aquaxg>





ORTECO GPS M.C.S.
(accessory)



NEW POWER PACKS

New Stage 5 / Tier 4 final compliant engines, watercooled and equipped with a diesel particulate filter



DOWN THE HOLE HAMMER
(accessory)



PLATES - Plates of super resistant material with post profiles milling

Technical features		
Model	950 J	1200 J
Hammer power	950 Joules	1200 Joules
Strokes per minute	620/1500	570/1180
Mast tilt kit	Standard	Standard
Extractor set-up	Standard	Standard
Auxiliary Hydraulic System	Standard	Standard
Electrical System	12 Volt	12 Volt
YANMAR diesel engine	4TNV88C	4TNV88C
Double speed system	Standard	Standard
Power (@ 3000 Rpm)	35,4 Kw (47,5 Hp)	35,4 Kw (47,5 Hp)
Max operating pressure	18 Mpa	18 Mpa
Oil flow	95 Dm ³ /min	95 Dm ³ /min
Hydraulic tank capacity	160 Dm ³	160 Dm ³
Diesel tank capacity	60 Dm ³	60 Dm ³
DFP Filter	Standard	Standard
Emission Legislation (*)	Stage 5 / Tier 4 final	Stage 5 / Tier 4 final
Color display with physical keys	3,5"	3,5"
Total weight	3950 Kg	4050 Kg

The manufacturer reserves the right to modify the technical features without prior notice.
Photos may show non-standard accessories.



LASER KIT (accessory)



(*) also available with Stage 3A compliant engines

Road Safety

Special machines

HD 45°

Tracked pile driver

Thanks to its raised frame and the ability to drive the support poles at 45°, it is the ideal machine for the strengthening activities on already installed barriers. It is also possible to equip it with a rotor for anchoring screw poles. Faithful to our identity, we have also optimized the project by equipping the machine with a hammer able to perform the ordinary activity of vertical driving.

Safety and ergonomics have always informed Orteco's projects: all operations can be carried out through a radio control, so as to allow operators to carry out their activities at a safe distance, with undoubted benefits of hearing protection and general safety on site.



Download the data sheet
and watch our videos

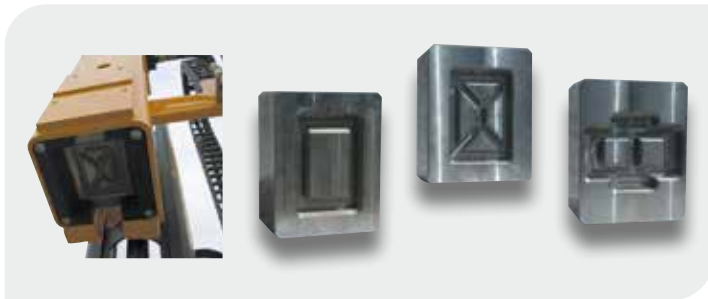
<https://rb.gy/aquaxg>





NEW POWER PACKS

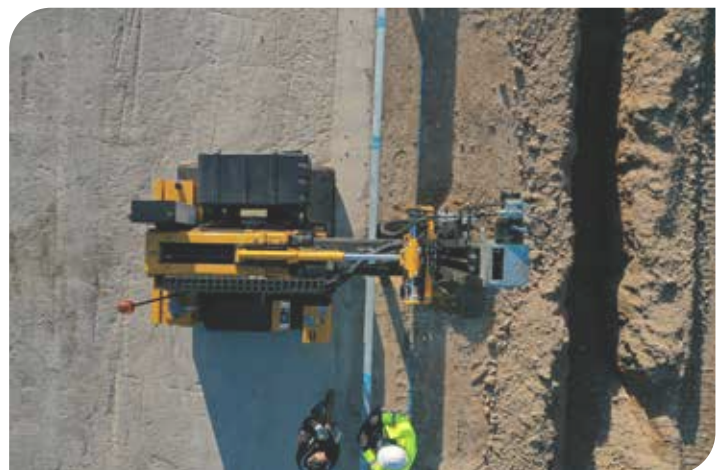
New Stage 5 / Tier 4 final compliant engines, watercooled and equipped with a diesel particulate filter



PLATES - Plates of super resistant material with post profiles milling



Technical features	
Model	HD45°
Hammer power	550 Joules
Strokes per minute	540/1670
Electrical System	12 Volt
YANMAR diesel engine	4TNV88C
Power (@ 3000 Rpm)	35,4 Kw (47,5 Hp)
Max operating pressure	20 Mpa
Oil flow	95 Dm ³ /min
Hydraulic tank capacity	160 Dm ³
Diesel tank capacity	60 Dm ³
DFP Filter	Standard
Emission Legislation (*)	Stage 5 / Tier 4 final
Color display with physical keys	3,5"
Total weight	5370 Kg
<small>The manufacturer reserves the right to modify the technical features without prior notice. Photos may show non-standard accessories.</small>	



(*) also available with Stage 3A compliant engines

Road Safety

Special machines

P.B.ONE - Barrier Installer Machine

Tracked Machine

The **P.B.ONE** barrier installer is a machine designed to transport the guardrail, take one barrier at a time, deposit it on two positioning arms which bring the guardrail closer to the posts with precise and independent movements, so to allow the operators to insert the bolts and tighten them without the fatigue of lifting the guardrail. This machine is controlled by radio remote control to allow the operator to be in the best position with the best visibility. In this way, operators are prevented from lifting the barrier off the ground weighing approximately 90 kgs.



Download the data sheet
and watch our videos

<https://rb.gy/aquaxg>





NEW POWER PACKS

New Stage 5 / Tier 4 final compliant engines, watercooled and equipped with a diesel particulate filter



Technical features	
Model	P.B.ONE
Remote Control	Standard
Electrical System	24 Volt
YANMAR diesel engine	3TNV88C
Power (@ 3000 Rpm)	27,5 Kw (36,9 Hp)
Max operating pressure	20 Mpa
Oil flow	110 Dm ³ /min
Hydraulic tank capacity	75 Dm ³
Diesel tank capacity	75 Dm ³
DFP Filter	Standard
Emission Legislation (*)	Stage 5 / Tier 4 final
Color display with physical keys	3,5"
Total weight	3500 Kg

The manufacturer reserves the right to modify the technical features without prior notice. Photos may show non-standard accessories.



(*) also available with Stage 3A compliant engines

Vineyards

Pile driver

PPA 230 J / 550 J - Agricultural Piledriver

Tracked pile driver

PPA is a tracked machine for the construction of vineyard systems, fully controllable via Orteco GPS Machine Control System: a simple, small-sized and easy-to-use, safe machine, designed to increase productivity and reduce costs. Thanks to Orteco's geolocalized autonomous displacement, the machine moves automatically, moving to the driving points with top notch precision, cutting the driving at the pre-set height.



Download the data sheet
and watch our videos

<https://rb.gy/aquaxg>





NEW POWER PACKS

New Stage 5 / Tier 4 final compliant engines, watercooled and equipped with a diesel particulate filter



Technical features		
Model	230 J	550 J
Hammer power	230 Joules	550 Joules
Strokes per minute	80/1200	780/1720
Mast tilt kit	Standard	Standard
Double speed system	Standard	Standard
Electrical System	12 Volt	12 Volt
YANMAR diesel engine	3TNV88C	3TNV88C
Power (@ 3000 Rpm)	27,5 Kw (36,9 Hp)	27,5 Kw (36,9 Hp)
Max operating pressure	15 Mpa	15 Mpa
Oil flow	75 Dm ³ /min	75 Dm ³ /min
Hydraulic tank capacity	110 Dm ³	110 Dm ³
Diesel tank capacity	50 Dm ³	50 Dm ³
DFP Filter	Standard	Standard
Emission Legislation (*)	Stage 5 / Tier 4 final	Stage 5 / Tier 4 final
Color display with physical keys	3,5"	3,5"
Total weight	3010 Kg	3245 Kg

The manufacturer reserves the right to modify the technical features without prior notice.
Photos may show non-standard accessories.



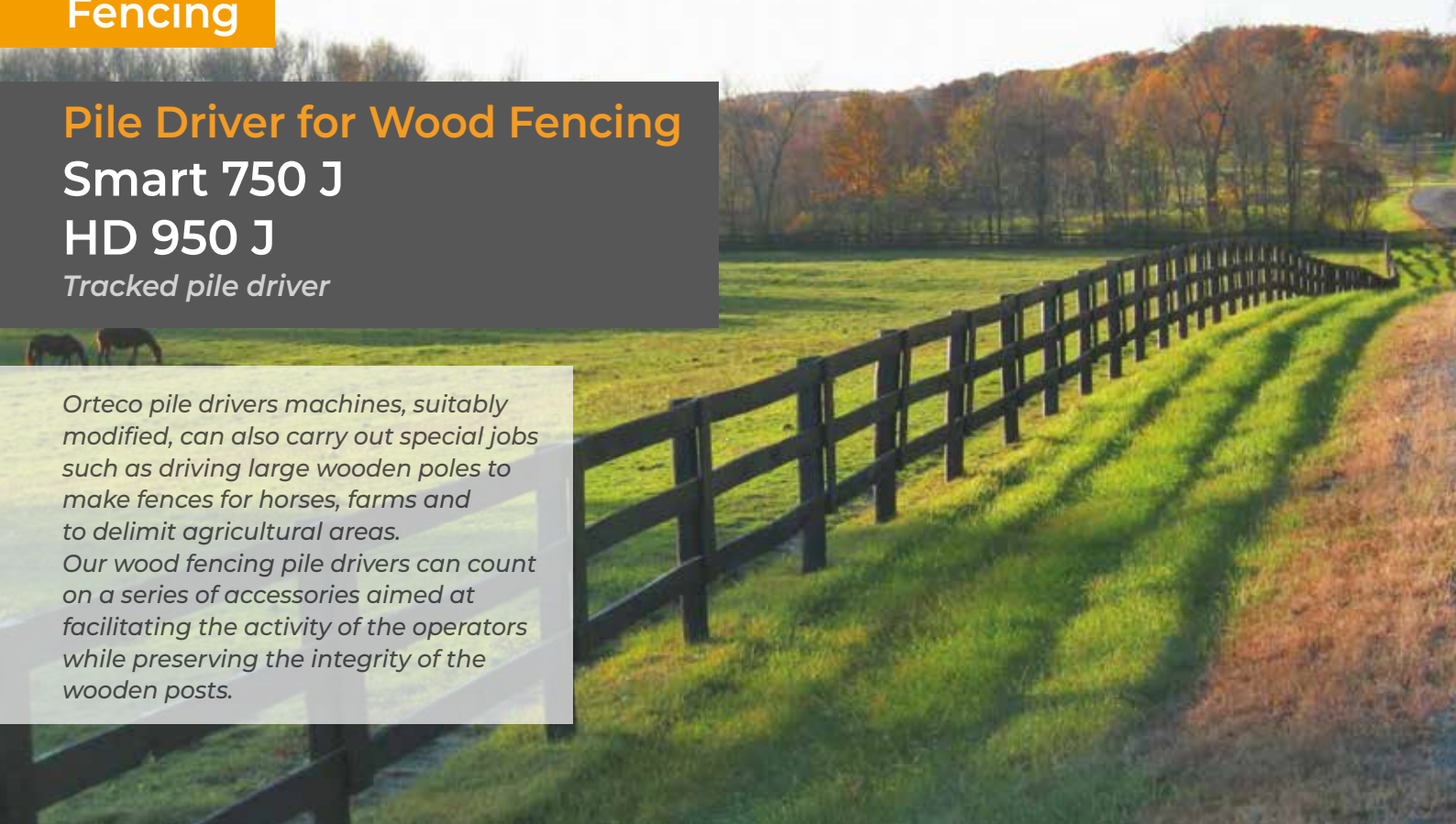
(*) also available with Stage 3A compliant engines

Fencing

Pile Driver for Wood Fencing
Smart 750 J
HD 950 J

Tracked pile driver

Orteco pile drivers machines, suitably modified, can also carry out special jobs such as driving large wooden poles to make fences for horses, farms and to delimit agricultural areas. Our wood fencing pile drivers can count on a series of accessories aimed at facilitating the activity of the operators while preserving the integrity of the wooden posts.



Download the data sheet and watch our videos

<https://rb.gy/aquaxg>





ORTECO GPS M.C.S.
(accessory)



NEW POWER PACKS

New Stage 5 / Tier 4 final compliant engines, watercooled and equipped with a diesel particulate filter



ROTATING HAMMER MOUTH FOR THE ORIENTATION OF THE ANGULAR SQUARED POSTS
(accessory)



PLATES - Plates of super resistant material with post profiles milling



LASER KIT (accessory)



Technical features		
Model	Smart 750 J	HD 950 J
Hammer power	750 Joules	950 Joules
Strokes per minute	780/1720	620/1500
Mast tilt kit	Standard	Standard
Extractor set-up	Standard	Standard
Auxiliary Hydraulic System	Standard	Standard
Electrical System	12 Volt	12 Volt
YANMAR diesel engine	3TNV88C	4TNV88C
Double speed system	Standard	Standard
Power (@ 3000 Rpm)	27,5 Kw (36,9 Hp)	35,4 Kw (47,5 Hp)
Max operating pressure	15 Mpa	18 Mpa
Oil flow	75 Dm ³ /min	95 Dm ³ /min
Hydraulic tank capacity	110 Dm ³	160 Dm ³
Diesel tank capacity	50 Dm ³	60 Dm ³
DFP Filter	Standard	Standard
Emission Legislation (*)	Stage 5 / Tier 4 final	Stage 5 / Tier 4 final
Color display with physical keys	3,5"	3,5"
Total weight	3050 Kg	3950 Kg

The manufacturer reserves the right to modify the technical features without prior notice. Photos may show non-standard accessories.



HYDRAULICALLY OPERATED LOWER GUIDE WITH PLASTIC ROLLERS TO PRESERVE THE SURFACES OF THE WOODEN PROFILES (accessory)

(*) also available with Stage 3A compliant engines

Beach Umbrellas

Pile driver for beach umbrellas

SUN 4.0 750 J / 950 J

Tracked pile driver

The **ORTECO SUN 4.0** pile driver was designed and built to carry out the job of determining the position and creating the seat for the base of the umbrella with the aid of the Orteco Machine Control GPS system. The machine moves by itself, moving from one point to another with speed and precision. The low weight and the technical solutions adopted aim to reduce costs and to protect the environment.



Download the data sheet
and watch our videos

<https://rb.gy/aquaxg>





NEW POWER PACKS

New Stage 5 / Tier 4 final compliant engines, watercooled and equipped with a diesel particulate filter



Technical features

Model	SUN 750 J	SUN 950 J
Hammer power	750 Joules	950 Joules
Strokes per minute	780/1720	620/1500
Mast tilting kit	Standard	Standard
Extractor set-up	Standard	Standard
Auxiliary Hydraulic System	Standard	Standard
Electrical System	12 Volt	12 Volt
Orteco GPS M.C.S.	Standard	Standard
YANMAR diesel engine	3TNV88C	3TNV88C
Double speed system	Standard	Standard
Power (@ 3000 Rpm)	27,5 Kw (36,9 Hp)	27,5 Kw (36,9 Hp)
Max operating pressure	15 Mpa	15 Mpa
Oil flow	75 Dm ³ /min	75 Dm ³ /min
Hydraulic tank capacity	110 Dm ³	110 Dm ³
Diesel tank capacity	50 Dm ³	50 Dm ³
DFP Filter	Standard	Standard
Emission Legislation (*)	Stage 5 / Tier 4 final	Stage 5 / Tier 4 final
Color display with physical keys	3,5"	3,5"
Total weight	3050 Kg	3150 Kg

The manufacturer reserves the right to modify the technical features without prior notice. Photos may show non-standard accessories.

(*) also available with Stage 3A compliant engines

Other applications

Pile driver for trucks

BASIC 600 J

SMART 600 J / 800 J

HD 800 J / 1000 J

Truck piledrivers range

The pile driver mounted on the body of a truck is particularly suitable for road maintenance works.

The mobility and the possibility of loading poles and guardrails, in addition to the road signs necessary for a construction site, make the truck-pile driver combination a winning solution for road barrier installation activities.

The accessories designed for our tracked pile drivers can all be used on the truck pile driver version as well.

An important feature of our pile drivers for trucks is that they can also be combined with the tracked undercarriage at a later time.

We have created the **BASIC**, **SMART** and **HEAVY DUTY** versions to allow assembly on trucks with different capacities.



Download the data sheet
and watch our videos

<https://rb.gy/aquaxg>

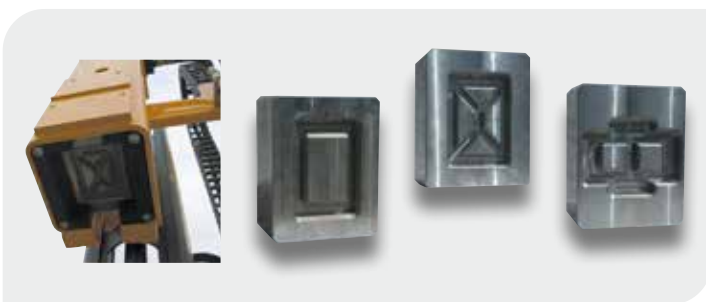




EXTRACTOR KIT (accessory)



FIFTH WHEEL (accessory)



PLATES - Plates of super resistant material with post profiles milling



Technical features

Model	BASIC 600 J	SMART 600 J	SMART 800 J	HD 800 J	HD 1000 J
Hammer power	590 Joules	590 Joules	950 Joules	950 Joules	1200 Joules
Strokes per minute	650/1000	650/1000	620/1500	620/1500	570/1180
Max operating pressure	15 Mpa	15 Mpa	15 Mpa	18 Mpa	18 Mpa
Oil flow	45/85 Dm ³ /min	45/85 Dm ³ /min	60/90 Dm ³ /min	60/90 Dm ³ /min	70/100 Dm ³ /min
Total weight	1000 Kg	1125 Kg	1275 Kg	1375 Kg	1525 Kg

The manufacturer reserves the right to modify the technical features without prior notice. Photos may show non-standard accessories.

Other applications

Pile drivers for Excavators, Backhoe loaders, Cranes 600 J / 800 J / 1000 J

Excavators - Backhoe loaders - Cranes range

The excavator/backhoe/crane pile driver has been designed for customers owning an excavator/backhoe who have to carry out non-demanding piling work.

This solution allows you to work off-road in difficult conditions, making use of the stability and traction of a tracked excavator/backhoe. The pile driver provides an excellent performance at an affordable price.

Pile drivers mounted on crane arms are special machines intended for those customers who have trucks with large cranes and who want to use them in combination with the pile driver.

This combination allows the pile driver to be mounted as efficiently as a truck mounted pile driver.



Download the data sheet
and watch our videos

<https://rb.gy/aquaxg>

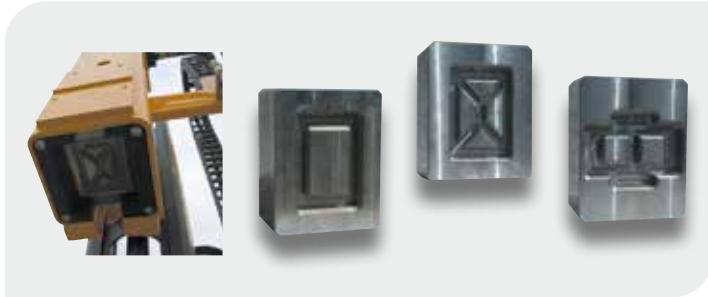




EXTRACTOR KIT (accessory)



LASER KIT (accessory)



PLATES - Plates of super resistant material with post profiles milling



Technical features

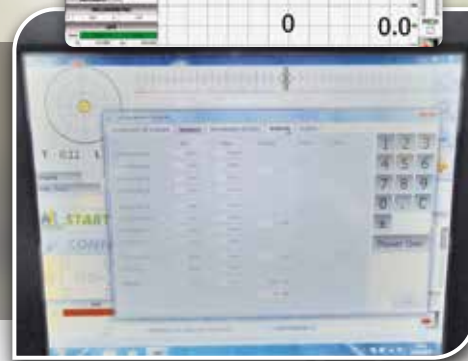
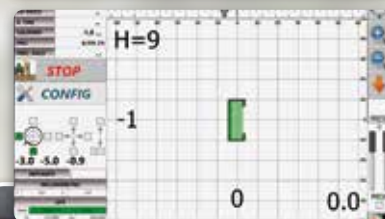
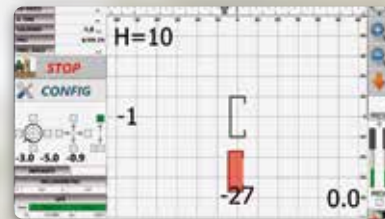
Model	600 J	800 J	1000 J
Hammer power	590 Joules	950 Joules	1200 Joules
Strokes per minute	650/1000	620/1500	570/1180
Max operating pressure	15 Mpa	15 Mpa	18 Mpa
Oil flow	45/85 Dm ³ /min	60/95 Dm ³ /min	80/100 Dm ³ /min
Total weight	970 Kg	1120 Kg	1270 Kg

The manufacturer reserves the right to modify the technical features without prior notice. Photos may show non-standard accessories.

Accessories

ORTECO GPS MACHINE CONTROL SYSTEM

The ORTECO Machine Control System is the most advanced GPS system for pile drivers on the market. It enables the fully automatic control of the unit, both during the driving operation and the machine displacement. Using this system, daily productivity increases significantly, reducing the margin of error to a level close to zero.



ON BOARD PC

CHARACTERISTICS:

- High Quality TFT-LCD Panel
- Brightness up to 700 nit enhanced visibility
- Built-in Wireless/Bluetooth/GPS module
- Low power consumption CPU only 3,5 W



DOUBLE ANTENNA

We use two-antennas base GPS system to collect real time positioning information .

GPS DOUBLE ANTENNA

The GPS radionavigation system + RTK technique (double frequency @ 20Hz) provides greater accuracy.



Accessories

CORRECTION OF VERTICALITY

Electro-Hydraulic system to self-level the column enabling a vertical ramming



DOWN THE HOLE HAMMER KIT

The down the Hole Hammer kit positions the hydraulic rotor between the pile driver hammer and the vertical sliding column and can be used to drill in rock, concrete (without reinforcement) or highly compact conglomerates easily and effectively.

When the rotor/Down the Hole Hammer KIT is not used, it can be released from the hammer and left in stand by position, ready for use. This system allows drilling and driving use independently without having to dismantle, offering crew efficiency, safety and reducing the need to dismantle/mount heavy parts when both applications are needed.



Accessories

HYDRAULIC AUGER

The hydraulic soil auger is an effective tool used to carry out excavation in mixed terrain and soil types, auger rotates both clockwise or counter-clockwise.



BLADE RAISER

The barrier segments of steel beam guard rail must first be bolted together and placed on the ground before handling them with the Blad Raiser. Then, The crawler-mounted pile driver equipped with the Blade Raiser lifts off the ground the attached segments, such action ease the mounting activity, ensuring the positioning of the blade on exact point for the pile to be installed into the ground and bolted to the rail.

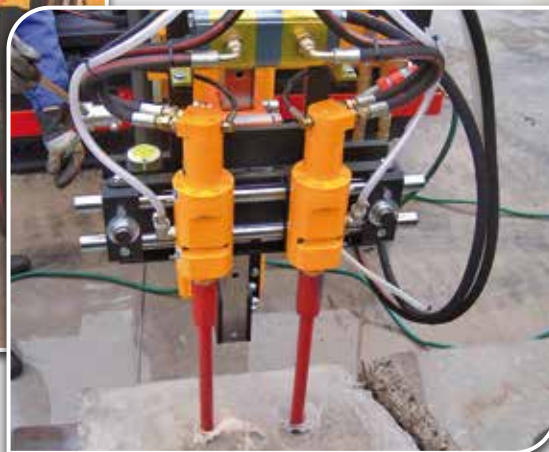


Accessories

CORE BORER

The Hydraulic Core Borer is used in combination with a pile driver to core drill concrete, reinforced concrete, and bituminous conglomerates.

The most common use of the machine is to core drill around the pile to be extracted (previously cut), to remove it and then use the same hole to install the new pile.



BICAROT

This 2-head core drilling machine can drill small holes (19-24 mm). It is commonly used to make holes in reinforced concrete to anchor piles with a plate bolted base.

Accessories

EXTRACTOR KIT

Orteco has developed a safe and effective way to extract damaged or inaccurately positioned posts using a lever hammer action, composed by:

- Stabilizer piston or stand
- Extracting lever
- Self-Closing Clamp
- Pins and Shackles

To make the Extractor Kit efficient, Orteco combined two actions: lifting and percussion, described as "Double action Extractor". Orteco Extraction system is very useful and allows crews to work safely with little risk of flying debris.



Accessories

ACTIVE LASER

By installing the active laser system on an ORTECO pile driver machine, the hammer stops automatically when it reaches a preset height. The height is determined by a laser emitter mounted on a tripod, which communicates with an active receiver mounted on the hammer.



REMOTE CONTROL

The remote control enables the operator to control both the hammering process and the machine displacement. This is made possible by the use of Danfoss electro-proportional distributors, available for the tracks control alone or for both piledriver and tracks.

<i>models</i>	<i>accessories</i>	GPS CONTROL SYSTEM	CORRECTION OF VERTICALITY	HYDRAULIC AUGER	ACTIVE LASER
Photovoltaic					
Pile driver HD 950 J / 1200 J		✓	✓	✓	✓
Pile driver HD Pro 5m 1200 J / 1500 J		✓	✓	✓	✓
Pile driver FEX 6m 1500 J / 1750 J		✓	✓	✓	✓
Special machines Pick & Ram 4.5m 1200 J		✓	✓		✓
Special machines P.P.M. Pole Positioning Machine		✓			
Road Safety					
Pile driver BASIC 550 J / 750 J				✓	
Pile driver SMART 750 J / 950 J		✓	✓	✓	✓
Pile driver HD 950 J / 1200 J		✓	✓	✓	✓
Special machines HD 45°		✓	✓		✓
Special machines P.B.ONE - Barrier Installer Machine		✓			
Vineyards					
Agricultural Piledriver PPA 230 J / 550 J		✓	✓		✓
Fencing					
Pile Driver for Wood Fencing Smart 750 J HD 950 J		✓	✓	✓	✓
Beach Umbrellas					
Pile driver for beach umbrellas SUN 4.0 750 J / 950 J		✓	✓		✓
Other applications					
Pile driver for trucks BASIC 600 J SMART 600 J / 800 J HD 800 J / 1000 J			✓	✓	✓
Pile drivers for Excavators, Backhoe loaders, Cranes 600 J / 800 J / 1000 J			✓	✓	✓

REMOTE CONTROL	CORE BORER / BICAROT	EXTRACTOR KIT	DOWN THE HOLE HAMMER KIT	BLADE RAISER
----------------	----------------------	---------------	--------------------------	--------------

✓	✓	✓	✓	
✓	✓	✓	✓	
✓	✓	✓	✓	
✓				
✓				

	✓	✓	✓	
✓	✓	✓	✓	✓
✓	✓	✓	✓	✓
✓	✓			
✓				

✓				
---	--	--	--	--

✓			✓	
---	--	--	---	--

✓				
---	--	--	--	--

✓		✓		
✓	✓	✓	✓	

Consulting and assistance

A successful manufacturer needs to minimize its machines downtime, as well as costs, keeping them well serviced.

We have always partnered our customers consulting them for any need, advising them on the most suitable solutions for their needs. Furthermore, to guarantee the highest technical level, our dealers network around the world is regularly trained.

We're well aware that a good assistance is a relevant added value and we are committed to offer a strong after-sales support:



Support requests



Quotations



Genuine spare parts



Use and maintenance manuals





ORTECO®
S.r.l a socio unico



Orteco Srl a socio unico

Società soggetta alla direzione e controllo di Cer Gas s.c.r.l.

Via 2 Giugno, 19 - 40011 Anzola dell'Emilia (BO)
Tel. +39 051731051 - Fax +39 051731925 - orteco@orteco.com

P.IVA IT00593131204 - C.F. 03065630372
Capitale sociale € 16.000 i.v. - Reg. Imprese di Bologna n. 03065630372 - REA n. 261340