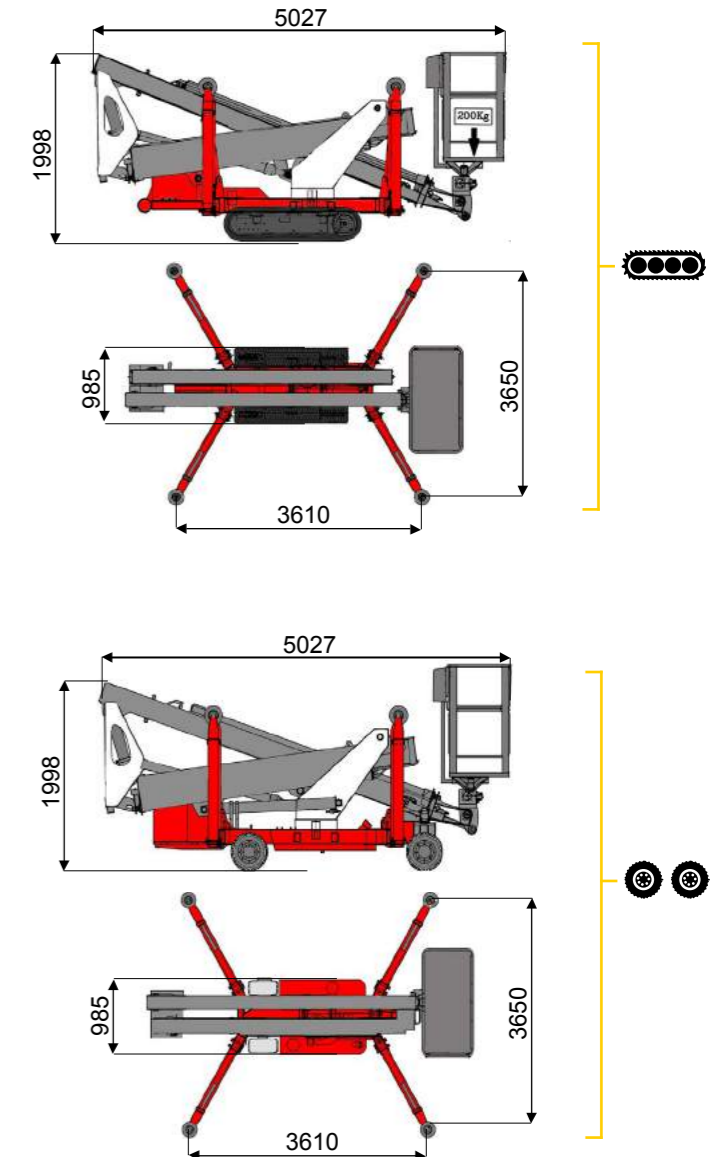
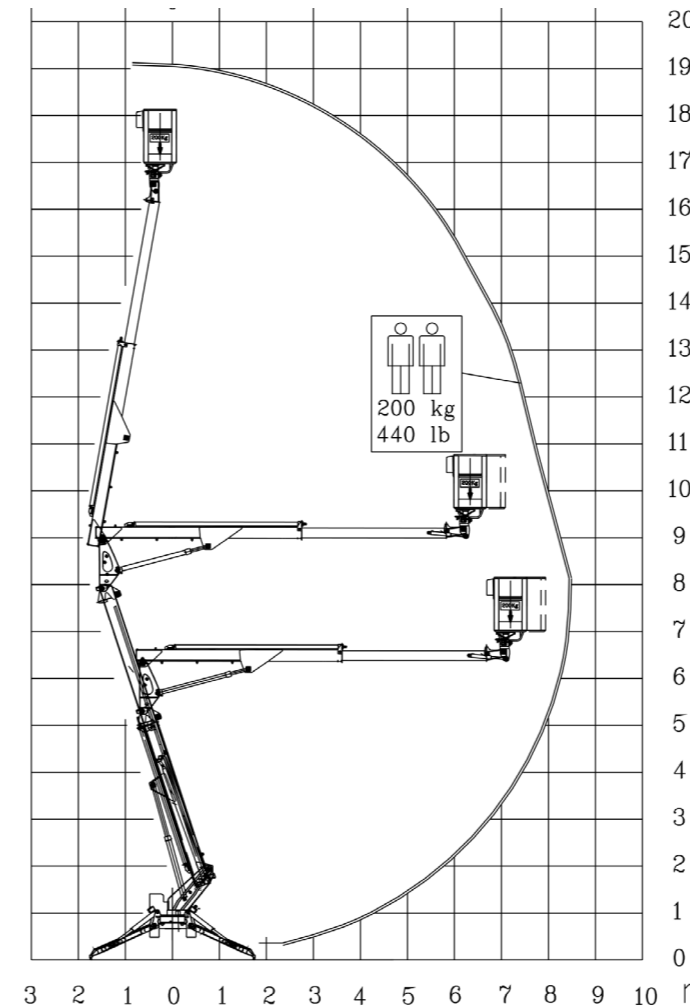




**19 m** ↑  
**8,5 m** →  
**200 Kg** 👤 👤



**BI-ENERGY**  
Diesel+AC



<b>TZX 190/C</b>	🔋	19 m	8,5 m	200 kg	360°	140x70 cm	90°+90°	3,65 m	21%	23%	2 km/h	2300 kg	16 kN	1,75 kN/m <sup>2</sup>	3,27 kN/m <sup>2</sup>
<b>TZX 190/R</b>	🔌	19 m	8,5 m	200 kg	360°	140x70 cm	90°+90°	3,65 m	21%	21%	1 km/h	2300 kg	16 kN	1,75 kN/m <sup>2</sup>	3,27 kN/m <sup>2</sup>

Available version:

**BI-ENERGY** (DIESEL+AC)  
**ECO** (DC+AC)

Characteristics and technical data are informative only and subjected to change without notice.



Silcom North UAB  
BALTIC OFFICIAL DELAER  
hello@silcomnorth.com  
Phone +370 67216691  
www.silcomnorth.com  
Antakalnio g. 17 Vilnius 10312  
**Lithuania**  
Company Code 30447488  
VAT Code LT100010886914

COMPANY WITH  
QUALITY SYSTEM  
CERTIFIED BY DNV GL  
= ISO 9001 =