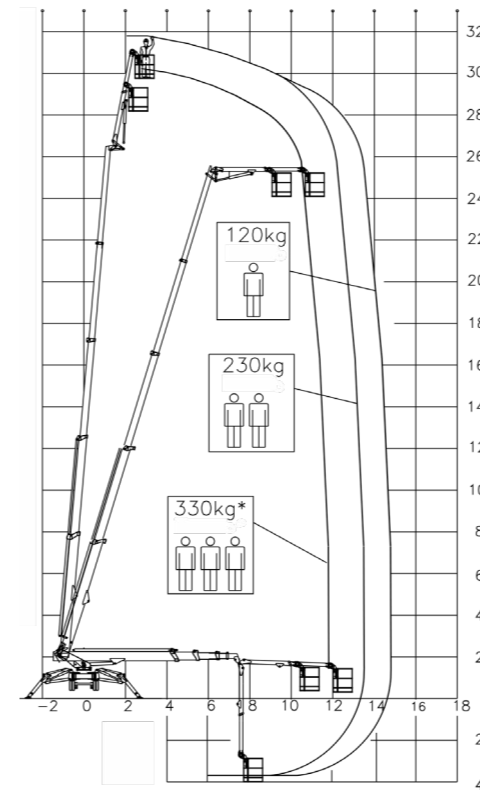
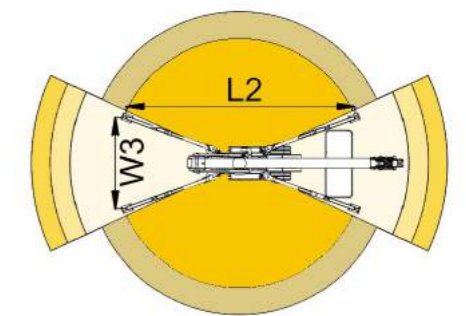
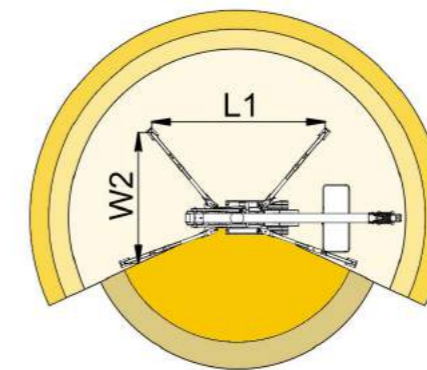
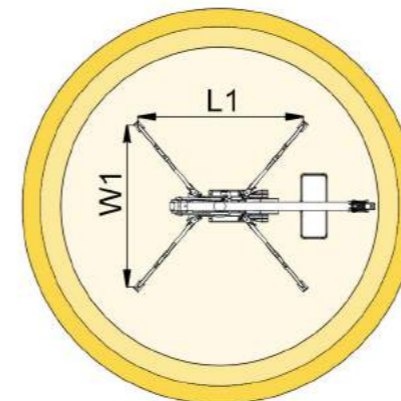
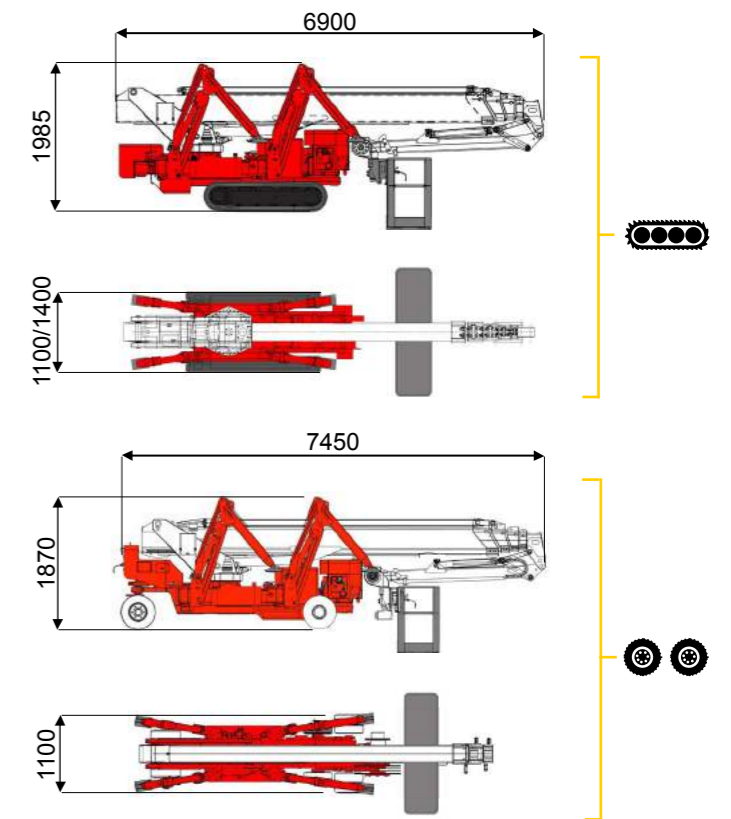




32 m ↑
14,3 m →
330 Kg* 👤👤👤

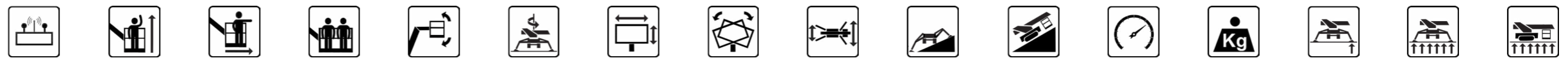


*optional



| | | | | | | | | | |
|---------|--------|--------|---------|------------|---------|---------|---------|---------|---------|
| 11,7 m | 13,3 m | 14,3 m | 8,4 m | 10 m | L1 | L2 | W1 | W2 | W3 |
| 330 kg* | 230 kg | 120 kg | 330 kg* | 120/230 kg | 5125 mm | 6460 mm | 4760 mm | 3785 mm | 2820 mm |

BI-ENERGY
Diesel+AC



| | | | | | | | | | | | | | | | | |
|-----------------|----|------|--------|---------|------|------|-----------|---------|-------------|-----|-----|--------|---------|-------|------------------------|------------------------|
| XTJ 32/C | 🚗 | 32 m | 14,3 m | 330 kg* | 170° | 660° | 180x70 cm | 90°+80° | 2,82-4,76 m | 16% | 38% | 4 km/h | 5940 kg | 35 kN | 2,43 kN/m ² | 4,78 kN/m ² |
| XTJ 32/R | 🚗🚗 | 32 m | 14,3 m | 330 kg* | 170° | 660° | 180x70 cm | 90°+80° | 2,82-4,76 m | 16% | 18% | 2 km/h | 5940 kg | 35 kN | 2,43 kN/m ² | 4,43 kN/m ² |

Available version:

- BI-ENERGY (DIESEL+AC)
- ECO (DC+AC)
- HYBRID (DIESEL+DC)

Characteristics and technical data are informative only and subjected to change without notice.



Silcom North UAB
BALTIC OFFICIAL DELAER
hello@silcomnorth.com
Phone +370 67216691
www.silcomnorth.com
Antakalnio g. 17 Vilnius 10312
Lithuania
Company Code 30447488
VAT Code LT100010886914

COMPANY WITH
QUALITY SYSTEM
CERTIFIED BY DNV GL
= ISO 9001 =