

## Vacuum lifter



Model

FTS6EB 1000

 Kg max  
1000

 Power supply  
Electricity


Telescopic handle

The Vacuum Lifter for sheet metal FTS6EB 1000 is a model with electric operating system and it can be produced with voltage 220V 1phase or 400V 3phases. **The lifter FTS6EB 1000 is a model with telescopic structure**, adjustable in several positions.

The advantage of the telescopic Vacuum Lifter for sheets metal is to be able to lift, with a single tool, different formats of material as the structure can be **easily and quickly adapted from the largest to the smallest sheets**. The telescopic Vacuum Lifter is particularly suitable for serving laser cutting stations that need a professional and durable tool.

Thanks to its **lowered structure** it is possible to use the Vacuum Lifter to lift the sheets even in contexts where it is necessary to reduce the height under the hook, due to not particularly high ceilings or various impediments in height.

In addition to having a telescopic structure with width adjustment, the FTS6 metal sheet lifter also has a comfortable **telescopic handlebar** to control the lifter and maintain the correct safety distance from the load. The feature that distinguishes the FTS6 model is its sturdy and solid structure, specifically designed for professional and continuous use. This model also reduces a lot the transport costs, because it gets really compact when completely closed.



Horizontal lifting



6 suction pads d.310 mm



Safety devices



Capacity 1000Kg



Telescopic structure

Available also with  
capacity 1800kg

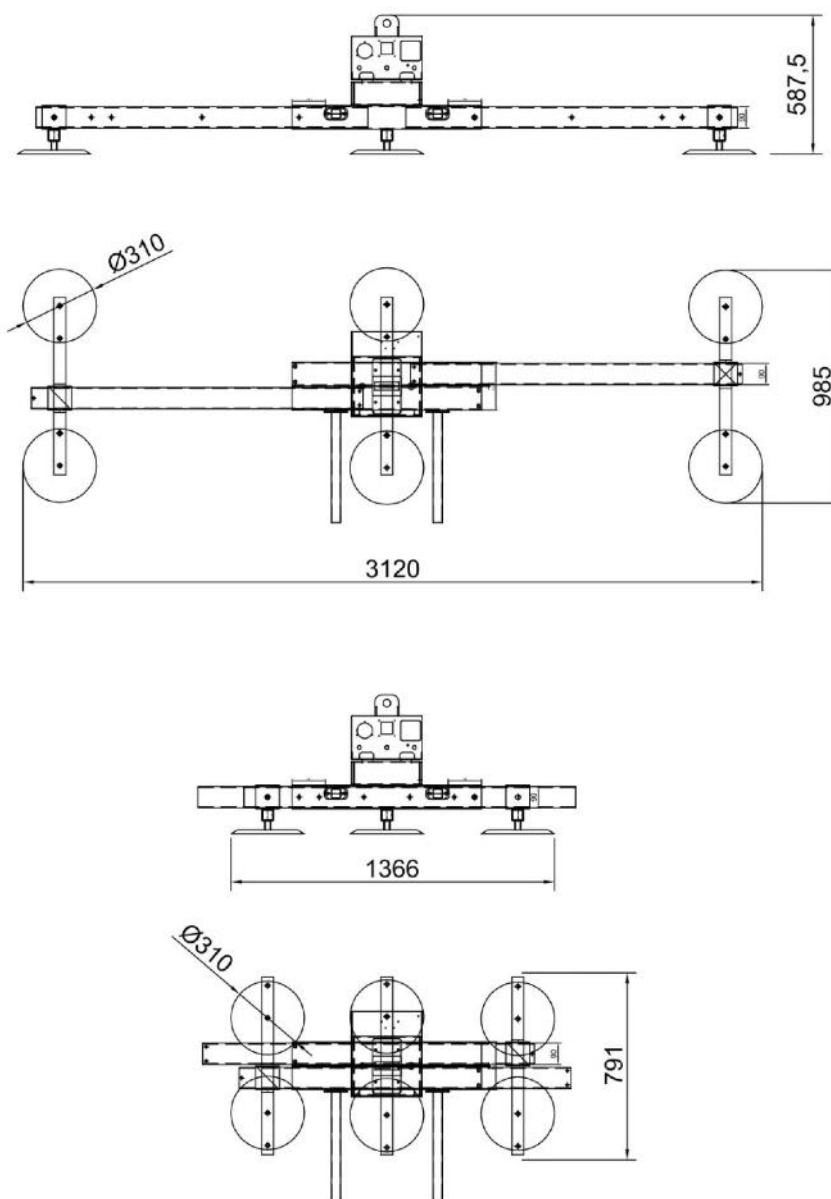
For standard sizes:

3 x 1,5 m ✓

4 x 2 m ✓

6 x 2,5 m ✗

## Technical drawing



## Technical specification

<b>Application</b>	Metal sheet, stainless steel, aluminium, plastic panels
<b>Lifting capacity</b>	1000 kg
<b>Suction pads</b>	Nr. 6 suction pads in vulcanized rubber, diameter 310 mm Suction pads with spring supports Exclusion of suction pads by cross arm
<b>Frame</b>	Telescopic steel frame structure fixed in horizontal position Adjustable position of suction pads and arms
<b>Operating system</b>	Electric 400V 3 phase 50Hz or 220V 1 phase 50Hz
<b>Vacuum system</b>	Vacuum circuit with vacuum reservoir, non-return valve, vacuum filter
<b>Safety systems</b>	Vacuum gauge with colored scale Audio visual low vacuum warning powered independently and with back up battery
<b>Weight of lifter</b>	124 kg
<b>Command</b>	Suction and release by slide valve command with safety system

