

Vacuum lifter

Series M4A

 Kg max
2000

AIR Power supply
Compressed Air



The M4A is a series of vacuum lifters which contains a wide range of 4-plates models with capacities ranging from 500 kg to 2000 kg. The M4A series is compressed air powered. The **manual tilting system** allows a vertical – horizontal movement and vice versa. The maximum capacity of the lift depends on the size of the suction plates.

It is equipped with an **audio-visual alarm** control unit that warns the operator of possible dangerous situations. The vacuum gauge with coloured scale allows constant control of the vacuum level reached. It is present a **filtering system** for dust and condensation.



Horizontal lifting



4 suction pads



Vertical lifting



Max capacity 2000 kg



Manual tilt 0-90°



Safety devices

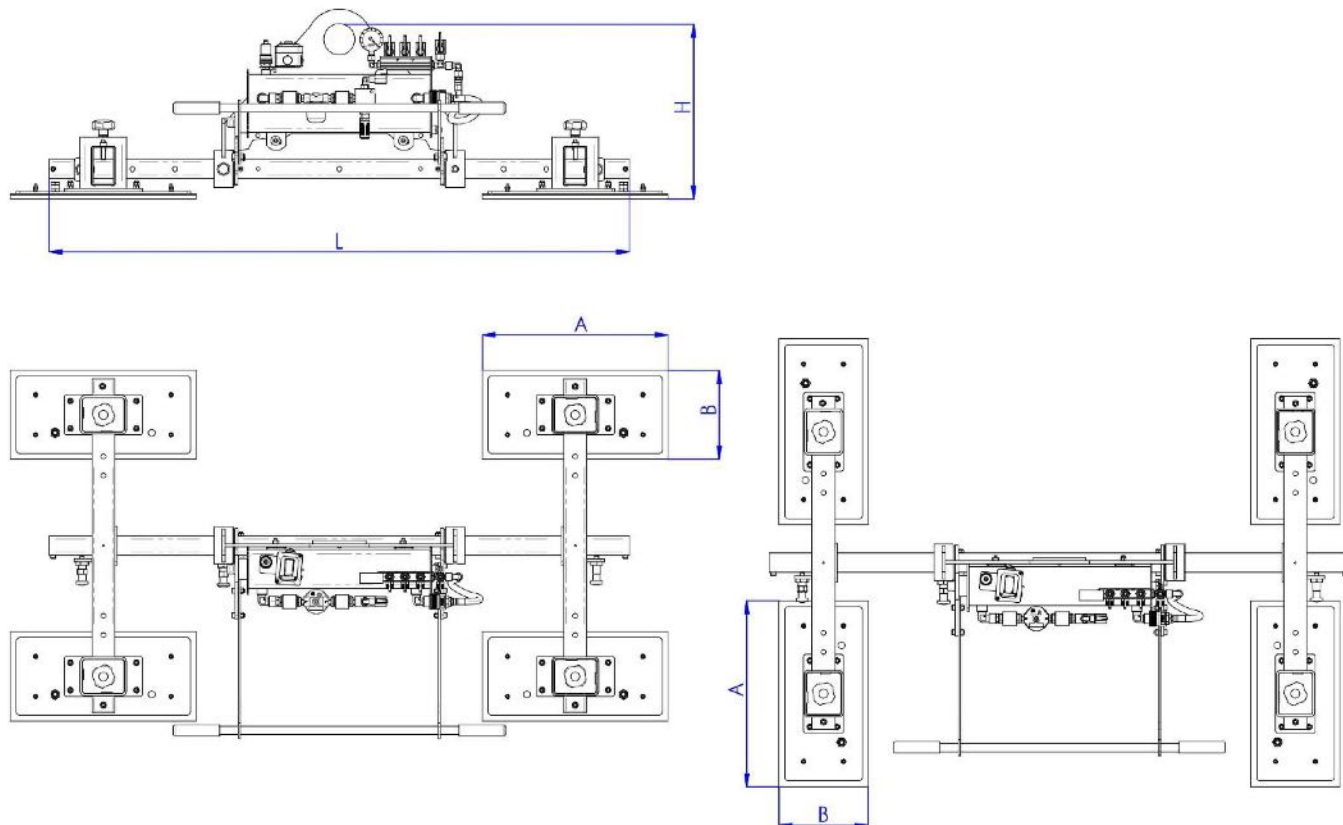
CE

made in
ITALY

Technical specification

Application	Marble and granite slabs - not porous materials
Lifting capacity	Models up to 2000 kg
Suction pads	Nr. 4 suction pad
Load movement	Manual tilt 0-90°
Operating system	Compressed air
Vacuum system	Vacuum circuit, complete of vacuum reserve and non return valve
Control	Manual valve on the lifter's frame Release of the load by dual action security command
Standard features	On-off double sliding valve with safety Audible and visual low vacuum warning devices Vacuum gauge with colored scale, vacuum filter, non return valves
Optional	White gaskets Holder for hoist command

Technical drawings



M4A series

 **Kg max 2000**

Product code	Lifting capacity (kg)	A (mm)	B (mm)	H (mm)
M4A 500	500	480	230	450
M4A 1000	1000	480	330	450
M4A 1500	1500	630	330	450
M4A 2000	2000	630	430	450

L = 1500 mm; on request different length