



Picture: SL 408 Outdoor

HIGHLIGHT

High Lifter option:
Choose extra manual extension of the arm for longer reach.



SL 408 OUTDOOR SERIES

LIFTS UP TO 380 KG / 840 LBS.

The SL 408 Outdoor series is ideal for construction sites where versatility is key. The combination of lifting power and a compact design makes this lift relevant for small- and medium-sized elements. Even when carrying a maximum load of 380 kg, the lift has more than enough power to get the job done.

The 408 series is fitted with wide twin tires to ensure that it does not get bogged down in off-road conditions. The lift is front-wheel driven and fitted with wide, puncture-proof tyres to ensure unique stability when driving with a full load. The lift is also available in a High Lifter version for additional reach.

Models: Outdoor / High Lifter

TECHNICAL SPECIFICATIONS

Model	SL 408 Outdoor	SL 408 Outdoor High Lifter
Lifting cap. arm in/out	380/200 kg - 840/440 lbs	380/100 kg - 840 /220 lbs
Lifting height	2,800 mm/110 in.	3,250 mm/128 in.
Extension of arm	600 mm /24 in.	600 + 600 mm/24 + 24 in.
Tip from horizontal	45° back/105° fwd.	45° back/90° fwd.
Side shift	100 mm /4 in.	100 mm/4 in.
Charging voltage	230 V/110V	230 V/110 V
Charging time	Appr. 8 hrs.	Approx. 8 hrs.
Running period	Up to 10 hrs.	Up to 10 hrs.
Front-wheel drive	1200 W AC	1200 W AC
Suction pads	4 x Ø 300mm/4 x Ø12 in.	4 x Ø 300mm/Ø12 in.
Width	820 mm / 32 in.	820 mm / 32 in.
Curb weight	630 kg/1,390 lbs.	680 kg/1,500 lbs.
Class	IP 65	IP 65



EXTENSION OF ARM
UP TO 120 CM /47 IN.



LIFTING HEIGHT
UP TO 325 CM /128 IN.



Choose the High Lifter version for additional reach and lifting height

BUILD YOUR SMARTLIFT

Foam-filled tyres	Standard
Single Gyro	■
Electric key switch	■
White, non-marking tires	■
Special Color	■
Wireless remote	■
Manual extension (High Lifter)	■
Electrical extension (High Lifter)	NA
Rotation yoke RT (High Lifter)	NA

■ Select the options you need

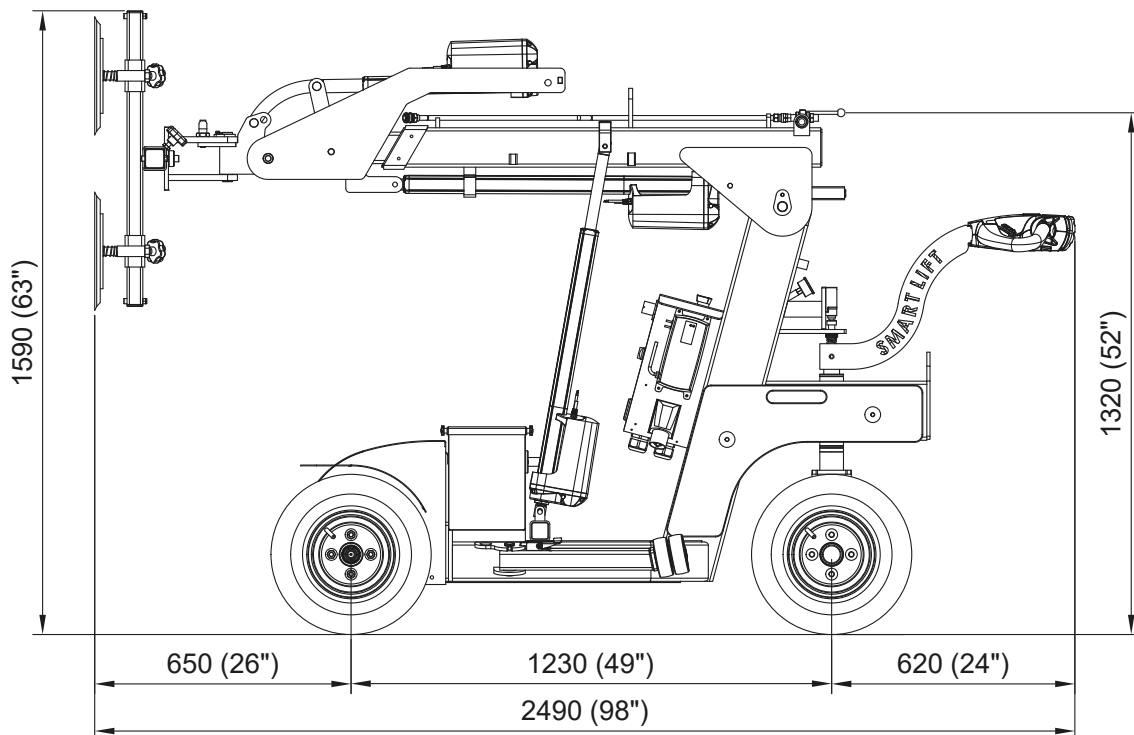
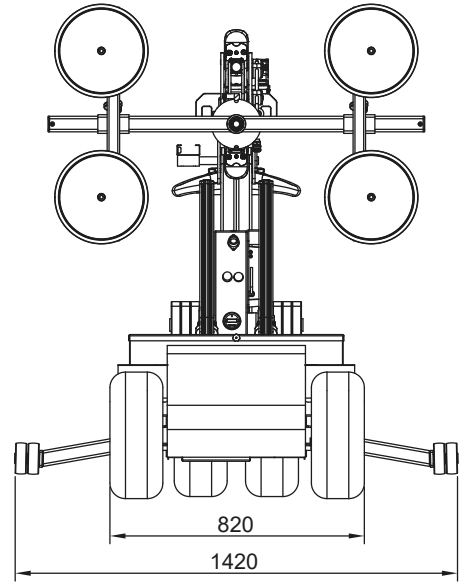


SMARTLIFT®

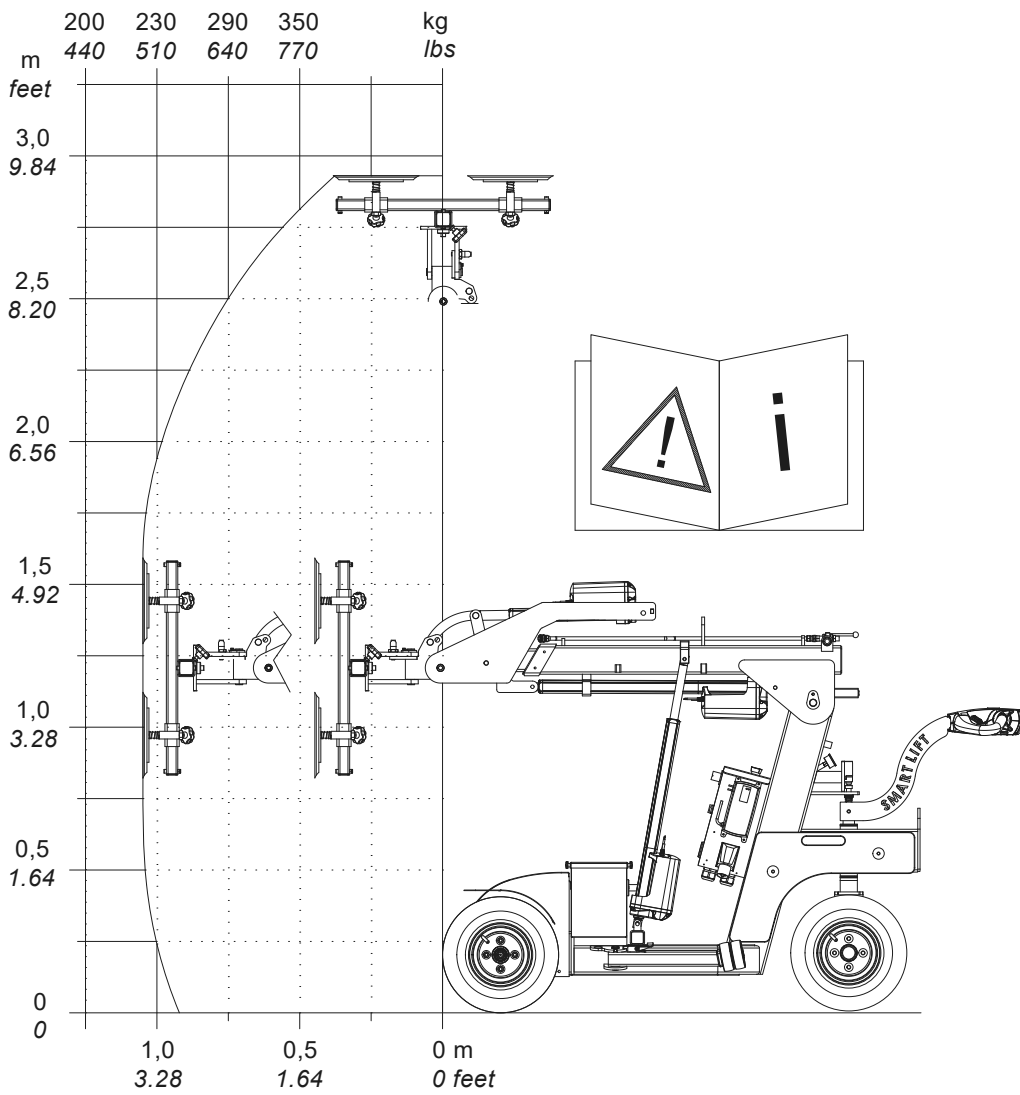
SL 408 OUTDOOR

TECHNICAL SPECIFICATIONS

Model	SL 408 Outdoor
Lifting cap. arm in/out	380/200 kg - 840/440 lbs
Lifting height	2,800 mm/110 in.
Extension of arm	600 mm /24 in.
Tip from horizontal	45° back/105° fwd.
Side shift	100 mm /4 in.
Charging voltage	230 V/110V
Charging time	Appr. 8 hrs.
Running period	Up to 10 hrs.
Front-wheel drive	1200 W AC
Suction pads	4 x Ø 300mm/4 x Ø12 in.
Width	820 mm / 32 in.
Curb weight	630 kg/1,390 lbs.
Class	IP 65



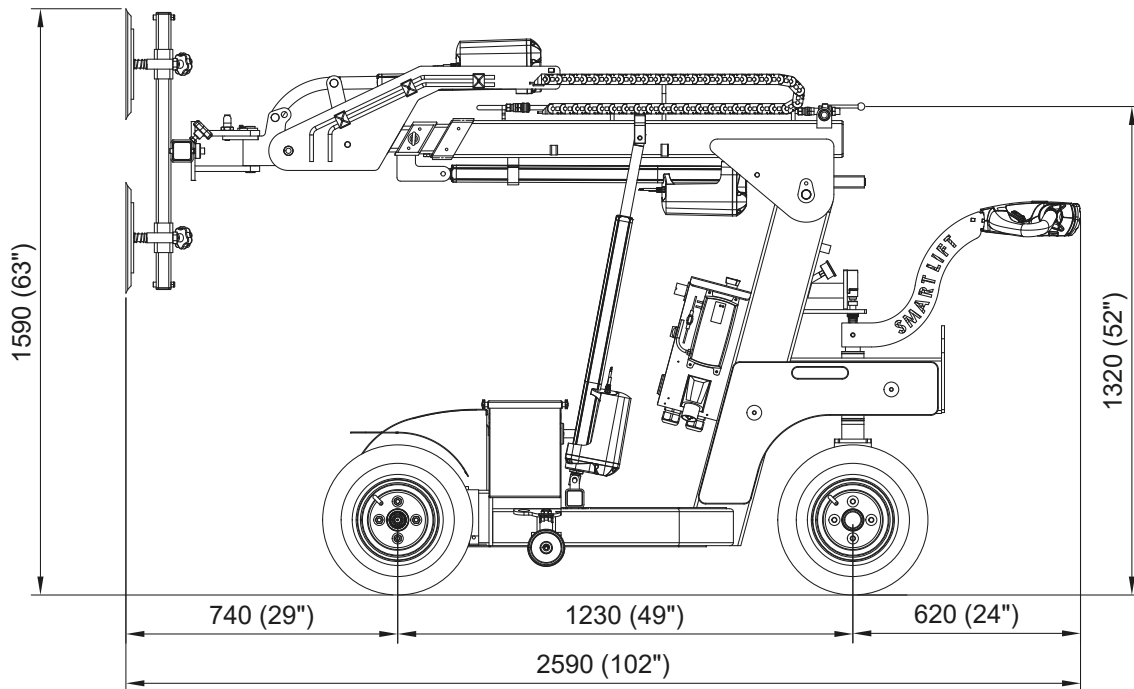
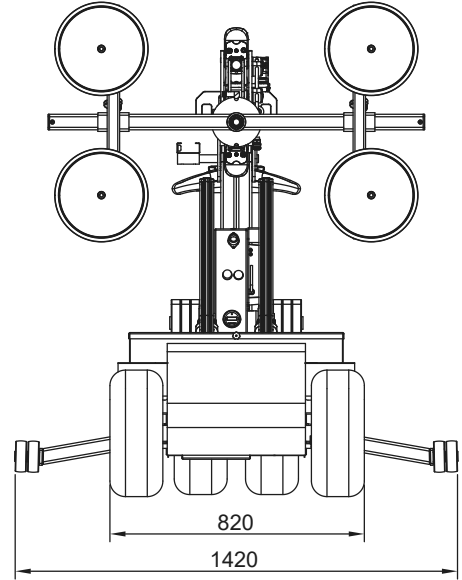
SL408 Outdoor



SL 408 OUTDOOR HIGH LIFTER

TECHNICAL SPECIFICATIONS

Model	SL 408 Outdoor	SL 408 Outdoor High Lifter
Lifting cap. arm in/out	380/200 kg - 840/440 lbs	380/100 kg - 840 /220 lbs
Lifting height	2,800 mm/110 in.	3,250 mm/128 in.
Extension of arm	600 mm /24 in.	600 + 600 mm/24 + 24 in.
Tip from horizontal	45° back/105° fwd.	45° back/90° fwd.
Side shift	100 mm /4 in.	100 mm/4 in.
Charging voltage	230 V/110V	230 V/110 V
Charging time	Appr. 8 hrs.	Approx. 8 hrs.
Running period	Up to 10 hrs.	Up to 10 hrs.
Front-wheel drive	1200 W AC	1200 W AC
Suction pads	4 x Ø 300mm/4 x Ø12 in.	4 x Ø 300mm/Ø12 in.
Width	820 mm / 32 in.	820 mm / 32 in.
Curb weight	630 kg/1,390 lbs.	680 kg/1,500 lbs.
Class	IP 65	IP 65



SL408 Outdoor High Lifter

