



HIGHLIGHT

- 1. High Lifter option:**
Extra manual or electrical extension of the arm.
- 2. Electric rotating yoke:**
Stepless 3D movement of the arm and yoke.



Models:
High Lifter (HL)
High Lifter Electric (HLE)
High Lifter Electric RT (HLE RT)

SL609 OUTDOOR SERIES

LIFTS UP TO 600 KG / 1,325 LBS

The SL609 HLE RT Outdoor features a long range of new and improved functionalities; designed for maximum efficiency, user-friendliness and workplace security:

- A straight up-down movement; not in a curve, but a precise and straight movement saving time and ensuring quick mounting
- Remote controlled vacuum system
- Faster operation with increased speed for lifting and tilting
- Save and reload position for repeated mounting
- Built in IoT device for theft protection, tracking & fleet management; the Trackunit data insights support better and faster technical assistance from Smartlift via remote diagnostics
- Maintenance-free gel battery pack

TECHNICAL SPECIFICATIONS

Model	SL609 Outdoor HLE RT
Lifting cap. arm in/out	600 / 150 kg - 1,325 / 330 lbs
Lifting height	4,200 mm / 165 in
Extension of arm	700+900 mm / 27+36 in
Tip from horizontal	40° back / 100° fwd
Side shift	100 mm / 4 in
Charging voltage	230 V / 110V
Charging time	Approx. 8 hrs
Running period	Up to 8 hrs
Front-wheel drive	1500 W AC
Suction pads	4 x Ø400 mm / 4 x Ø16 in
Width	830 mm / 33 in
Curb weight	Up to 960 kg / 2,120 lbs
Class	IP 65



EXTENSION OF ARM
UP TO 160 CM / 63 IN



LIFTING HEIGHT
UP TO 420 CM / 165 IN



Customize the lift to fit your exact needs by selecting from the options list below

BUILD YOUR SMARTLIFT

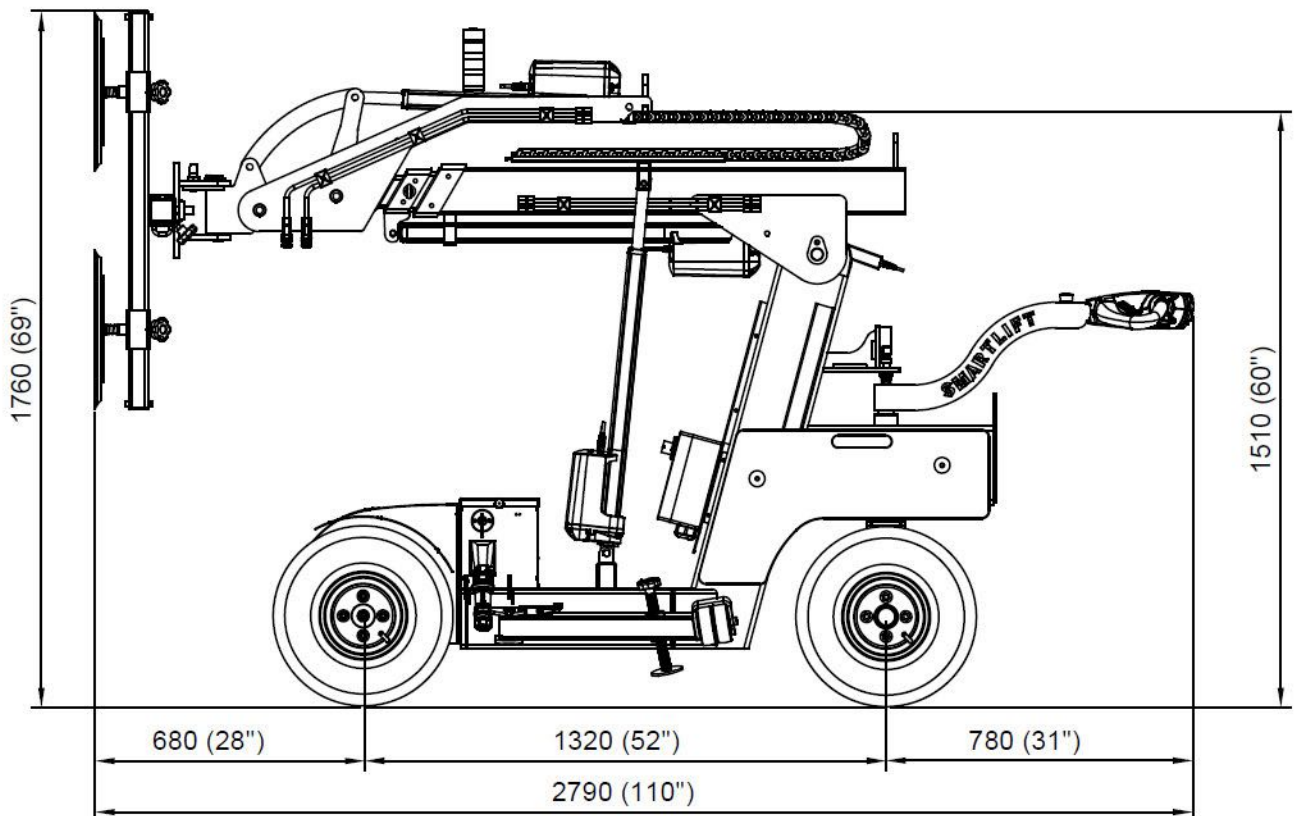
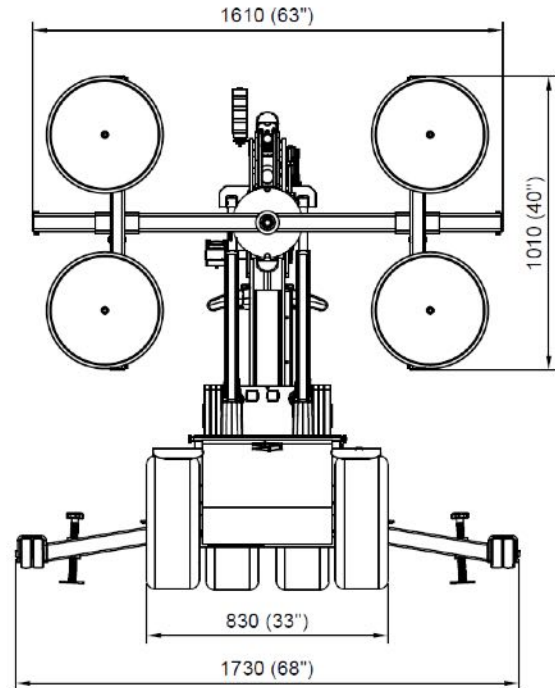
Foam-filled tyres	Standard
Electric key switch	■
White, non-marking tires	■
Special Color	■
Wireless remote	■
Manual extension (High Lifter - HL)	■
Electrical extension (High Lifter Elec. - HLE)	■
Rotating yoke RT (only HL and HLE)	■

■ Select the options you need

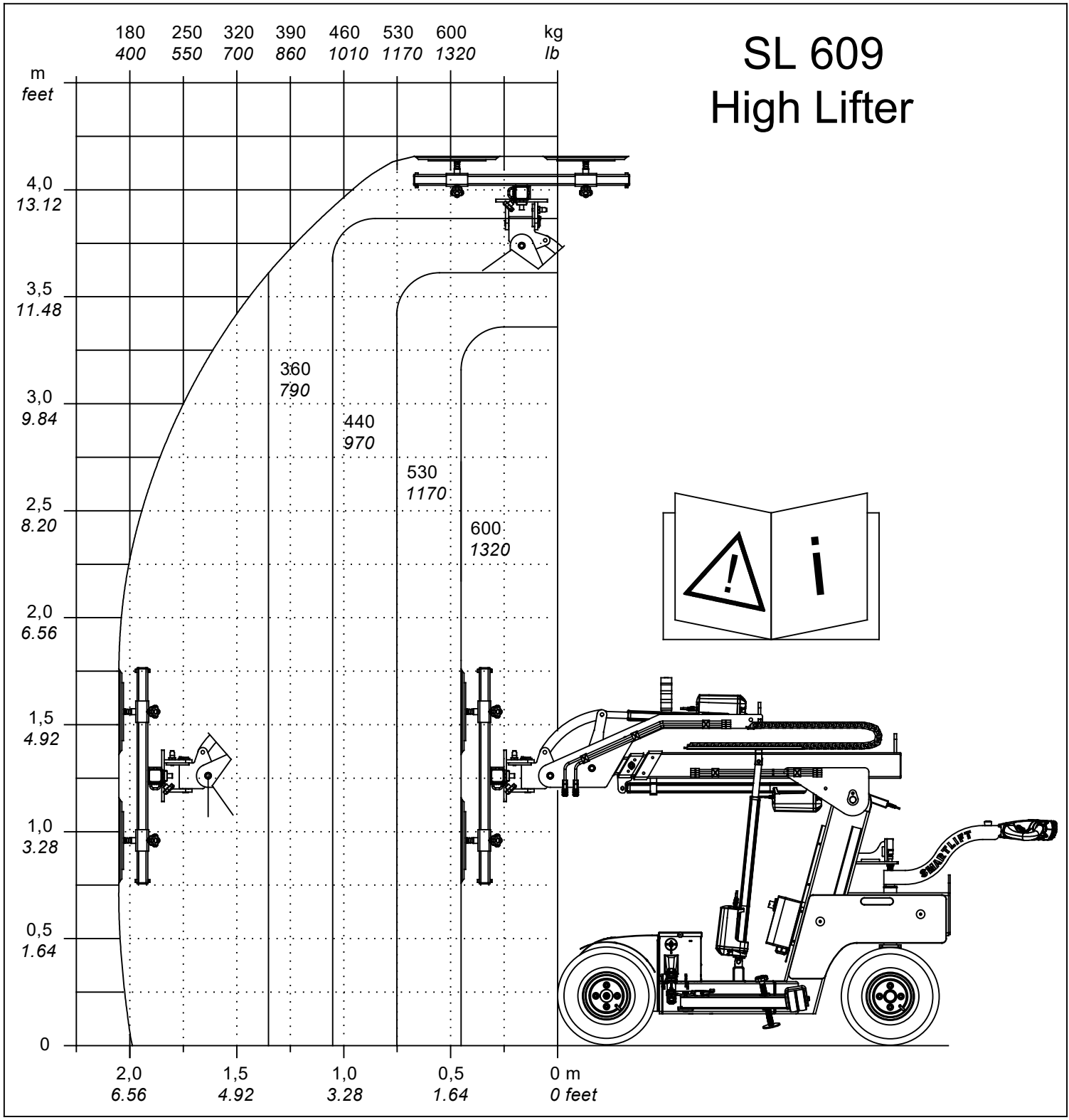
SL 609 OUTDOOR HL

TECHNICAL SPECIFICATIONS

Model	SL 609 Outdoor HL
Lifting cap. arm in/out	600/170kg – 1320/370lb
Lifting height	4150mm/163in
Extension of arm	700+900mm / 28+35in
Tip from horizontal	40° back / 100° fwd
Side shift	100 mm / 4in
Charging voltage	230 V / 110V
Charging time	Approx. 10 hrs.
Running period	Up to 10 hrs.
Front-wheel drive	1200 W AC
Suction pads	4 x Ø400mm / 4 x Ø16in
Width	830mm / 33in
Curb weight	930kg / 2050lb.



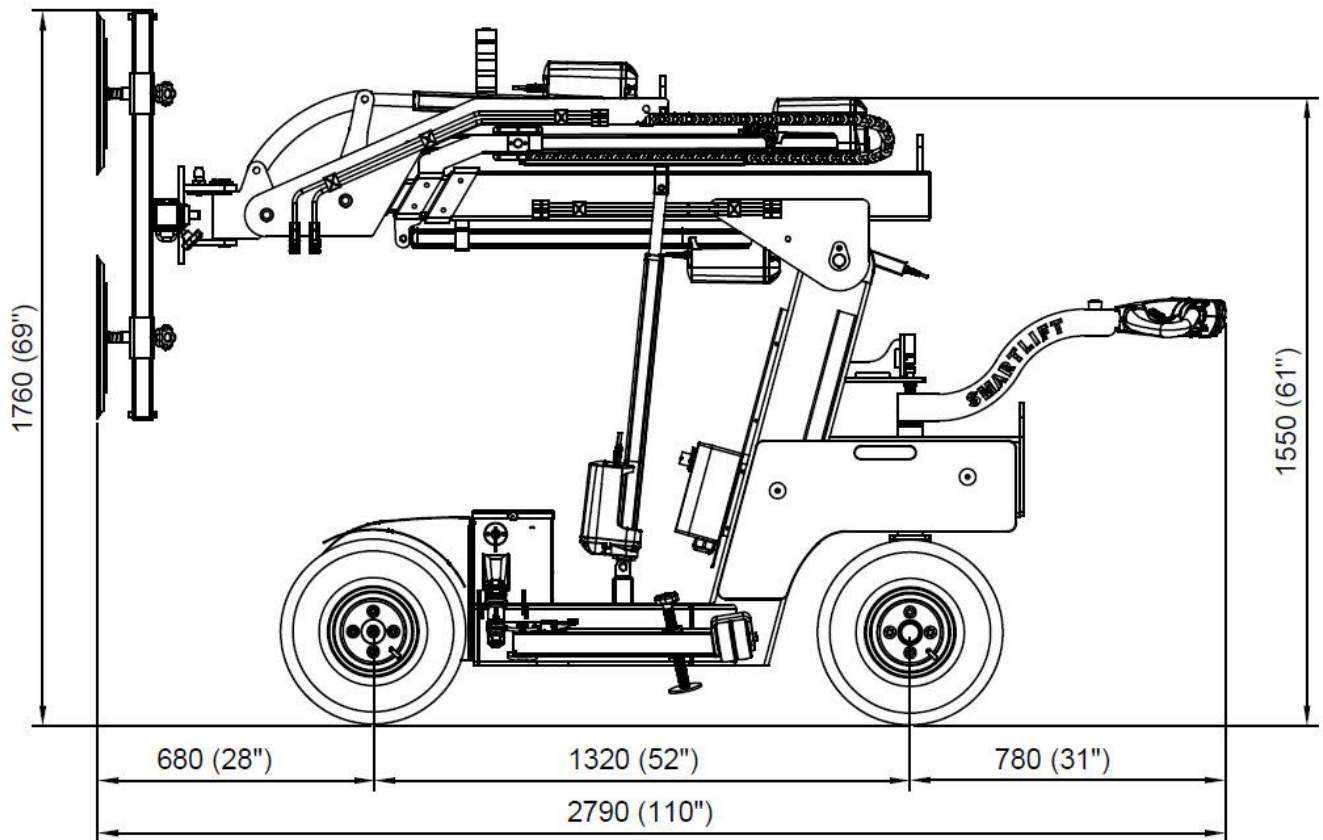
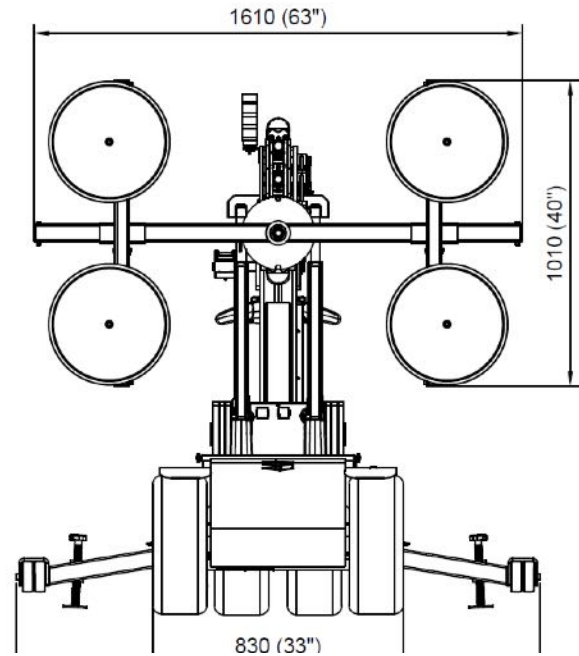
SL 609 High Lifter



SL 609 OUTDOOR HLE

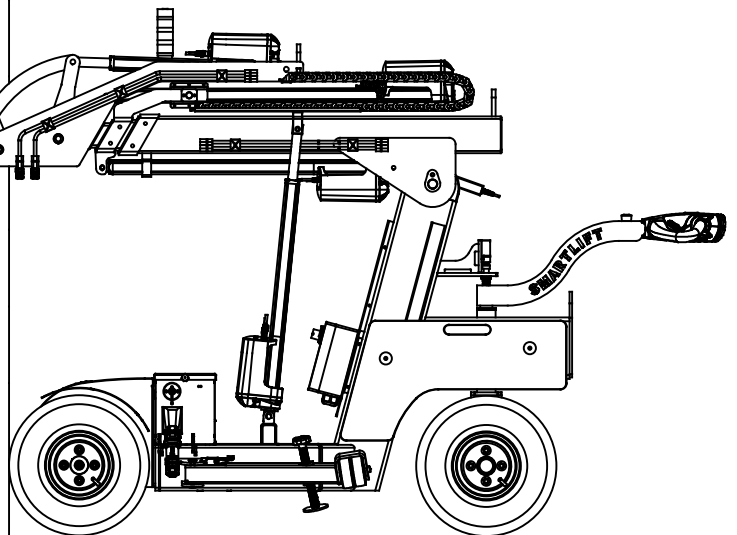
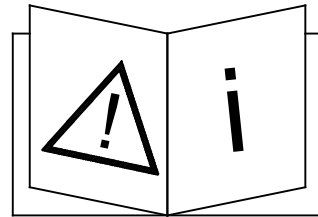
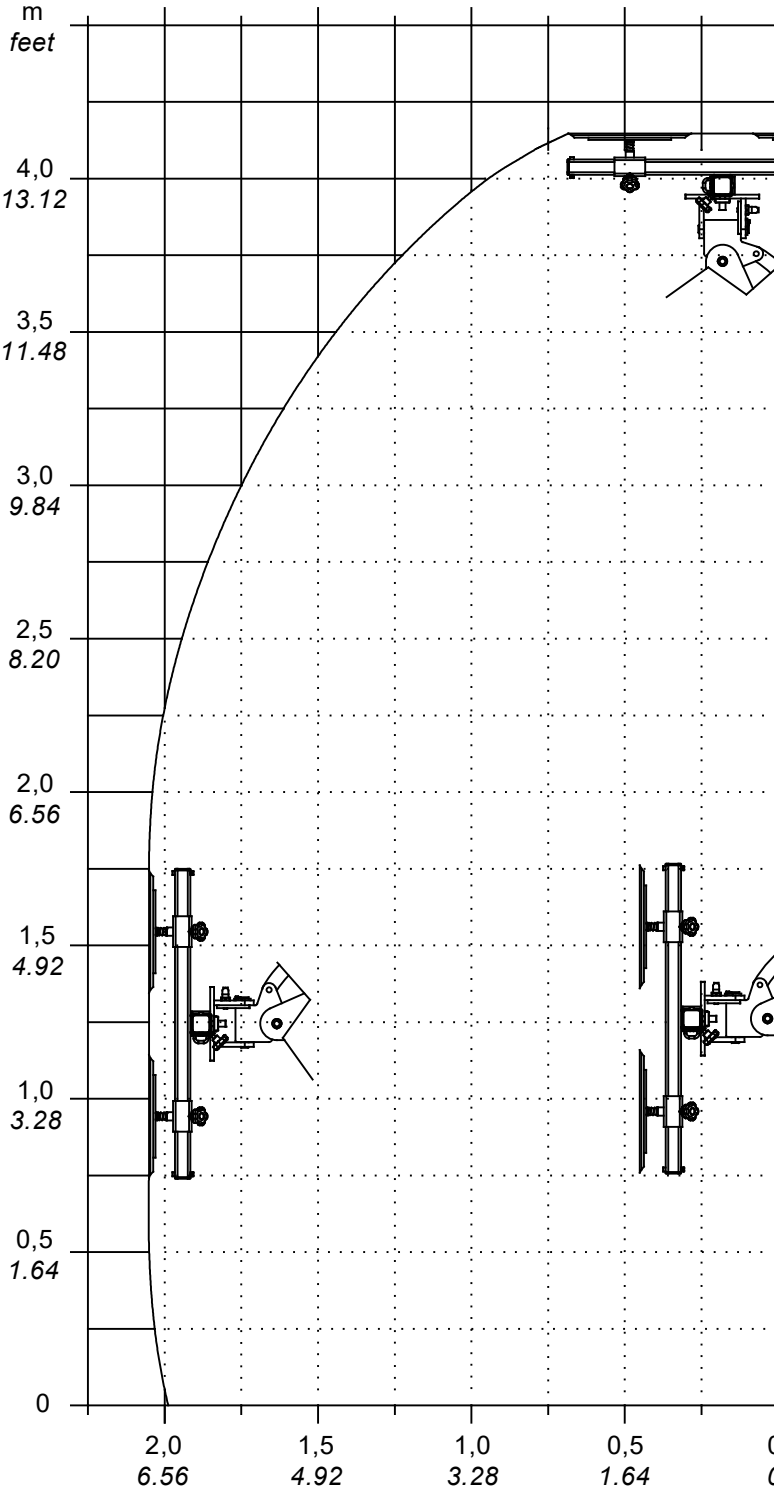
TECHNICAL SPECIFICATIONS

Lifting cap. arm in/out	600/170kg - 1320/370lb
Lifting height	4150mm/163in
Extension of arm	700+900mm/ 28+35in
Tip from horizontal	40° back / 100° fwd
Side shift	100mm / 4in
Charging voltage	230 V / 110V
Charging time	Approx. 10 hrs.
Running period	Up to 10 hrs.
Front-wheel drive	1200 W AC
Suction pads	4 x Ø400mm / 4 x Ø16in
Width	830mm / 33in
Curb weight	940kg / 2070lb



SL 609 High Lifter Electric

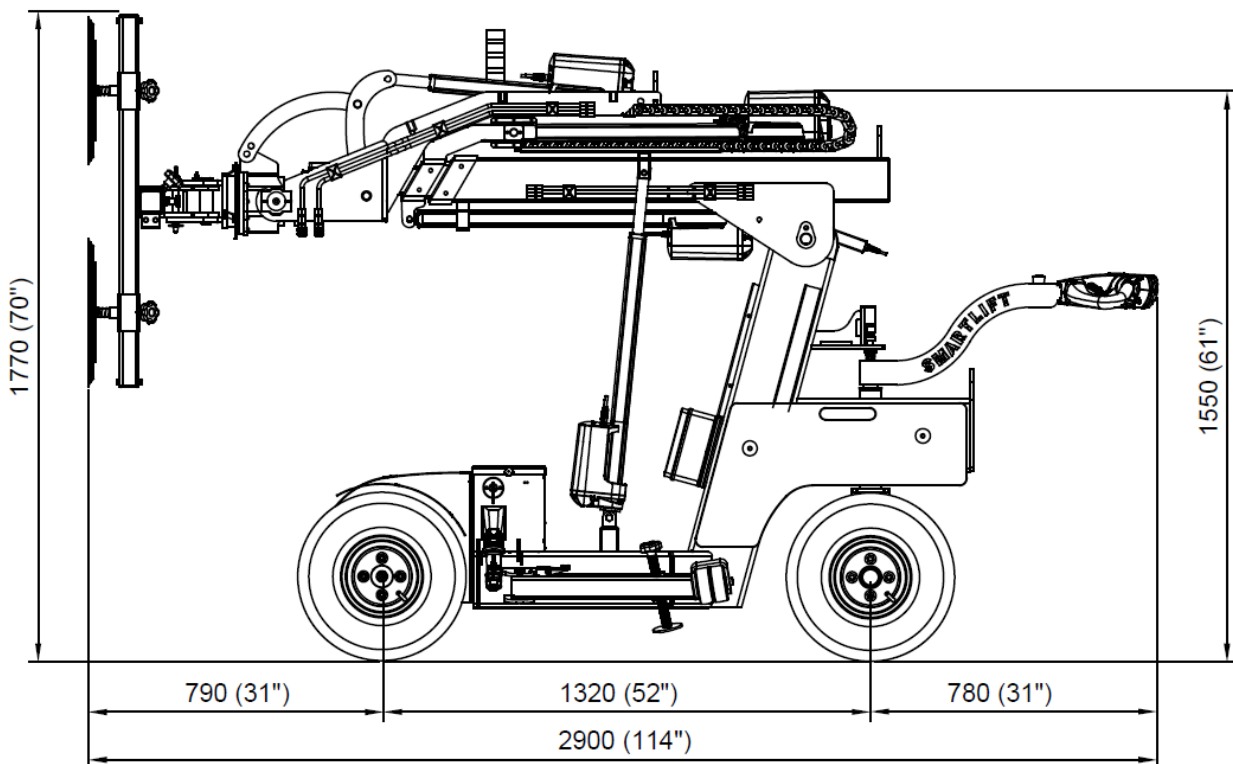
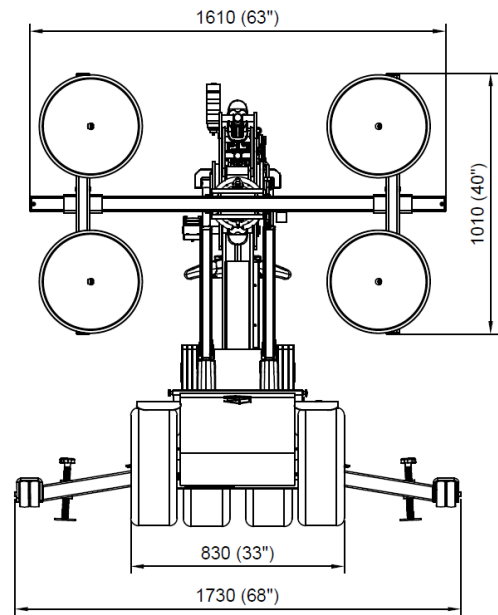
180	250	320	390	460	530	600	kg
400	550	700	860	1010	1170	1320	lb



SL609 OUTDOOR HLE RT

Technical specifications

Lifting cap. arm in/out	600/150kg – 1320/330lb
Lifting height	4250mm / 167in
Extension of arm	700+900mm / 28+35in
Tilt	32° back / 83° fwd
Side shift	100mm / 4in
Charging voltage	230V / 110V
Charging time	Approx. 10 hrs.
Running period	Up to 10 timer
Front-wheel drive	1500W
Width	830mm / 33in
Suction pads	4xØ400mm / 4x16in
Curb weight	950kg / 2090lb



180	250	320	390	460	530	600	kg
400	550	700	860	1010	1170	1320	lbs

SL 609 High Lifter Electric Rotation

m
feet

